

UNFIRED CLAY CLADDING

PATENTED FACADE SYSTEMS



ABOUT US

MCMFLEXI CLADDING India is a privately held company with its headquarters in Mumbai, INDIA along with a strong presence across the Nation with exclusive product display centers. MCMFLEXI Cladding proudly boasts of a patented revolutionary Cladding Technology offering High quality and Sustainable cladding products for both external & internal space.

MCM offers most varied collection of Natural, Durable & Aesthetically designed materials holding a wide range which encompasses MCM STONE, MCM WOOD & MCM BRICK. Best suited for External cladding, Interiors; Comprising of ceiling, flooring & furniture covering and also for grand landscaping. MCM Products are suitable for your complete architectural needs.

The product offering is thoughtfully invented keeping in mind today's need for lightweight and fast-track construction needs as these materials are easy to install and bring natural textures to all kinds of Building structures.

We at MCM India are committed to care for our planet thereby creating a better life and a better world to live in.

Pioneer Into Facade Solutions

In addition to giving buildings their distinctive appearance, facades are becoming more and more subject to strict technical requirements and energy sustainability tests.

Sustainable design and green construction practises are fundamental to facades. Supporters of green building materials say that it is time to abandon the traditional facade formats, and this movement is gradual but considerable. In reality, several of the most well-known "green" skyscrapers in the world are considering using sustainable, environmentally friendly materials to encapsulate their structures. A building's performance can be greatly improved by making the correct material choice.

MCM Unfired Clay is the best kind of building material for use in facade applications because of its durability, resistance to colour fading, ease of maintenance, and adaptability in terms of design. Clay ventilated facade systems provide a significant benefit due to the building envelope's water tightness and ventilation.

Over the past ten years, MCM Unfired Clay Cladding has established a new standard for the facade market by providing a variety of textures that satisfy all design aspirations.

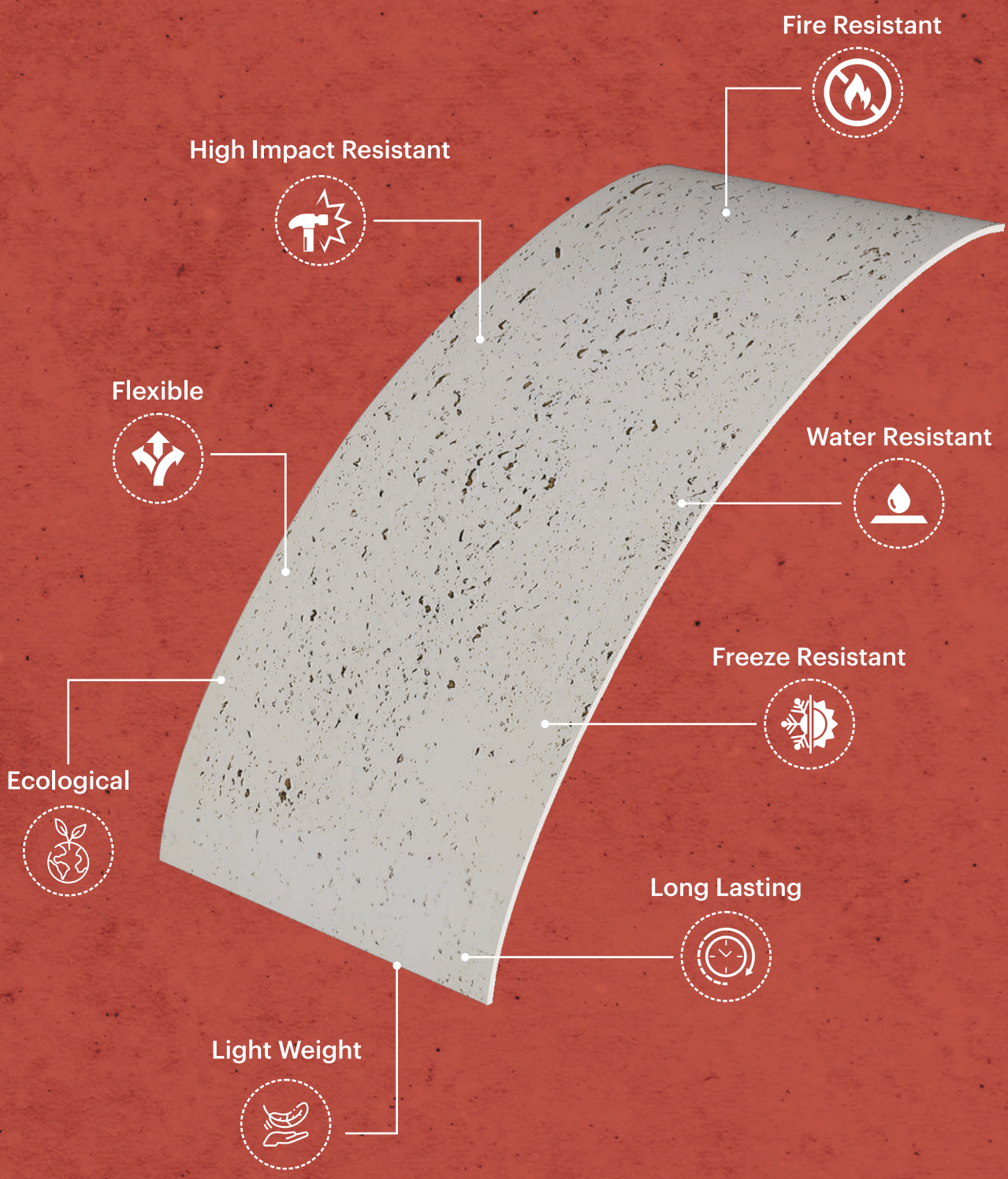
MCM's top-notch unfired clay facade solutions attract architects from all across the country with its exceptional combination of ethereal aesthetics and practical advantages.

Unique Functionality of PHOMI MCM

- Self-Cleaning Function
- Air Purification / Pollution Resistant Function
- Bacteria Inhibition and Sterilization Functions



Performances of PHOMI MCM



Honors:



Indian Green Building Council



US Patent No. 8,505,840 B2



European Patent No. 2157139



2013 112th Paris Concours Lépine International Award



Awarded for China 7th International Exhibition Inventions



PHOMI MCM
024-013-2219
"Eco-Friendly Building Material"



No: IN-XM-CP-5612-14052



The use of the Accreditation Mark indicates accreditation in respect of those activities covered by the accreditation certificate number 046



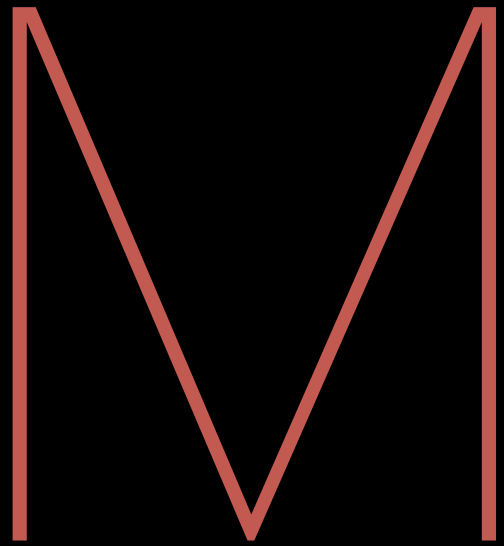
QAIC/CN/135 159-C

UNBELIEVABLY

S L



○ —• ≈ 2mm





MCM STONE

With natural surface textures in beautiful earthen shades, MCM stone finishes offer excellent durability and aesthetics to the buildings they are applied on





MCM SLATE STONE

Size (mm): 1200 x 600



SLATE SUNNY



SLATE VOLCANO



SLATE PHANTOM



SLATE ART



052

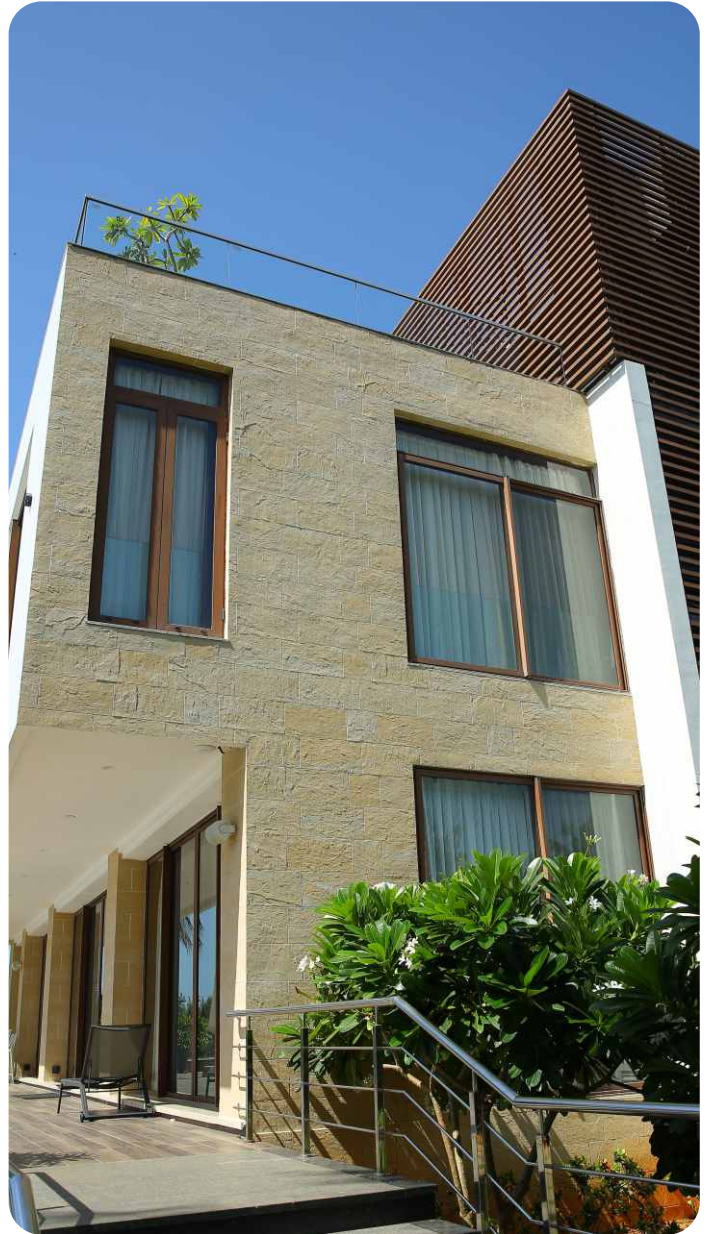


043

Note: Colour variation and gradation in every batch is a natural feature and part of our manufacturing process. These variations add to the overall character of MCM.

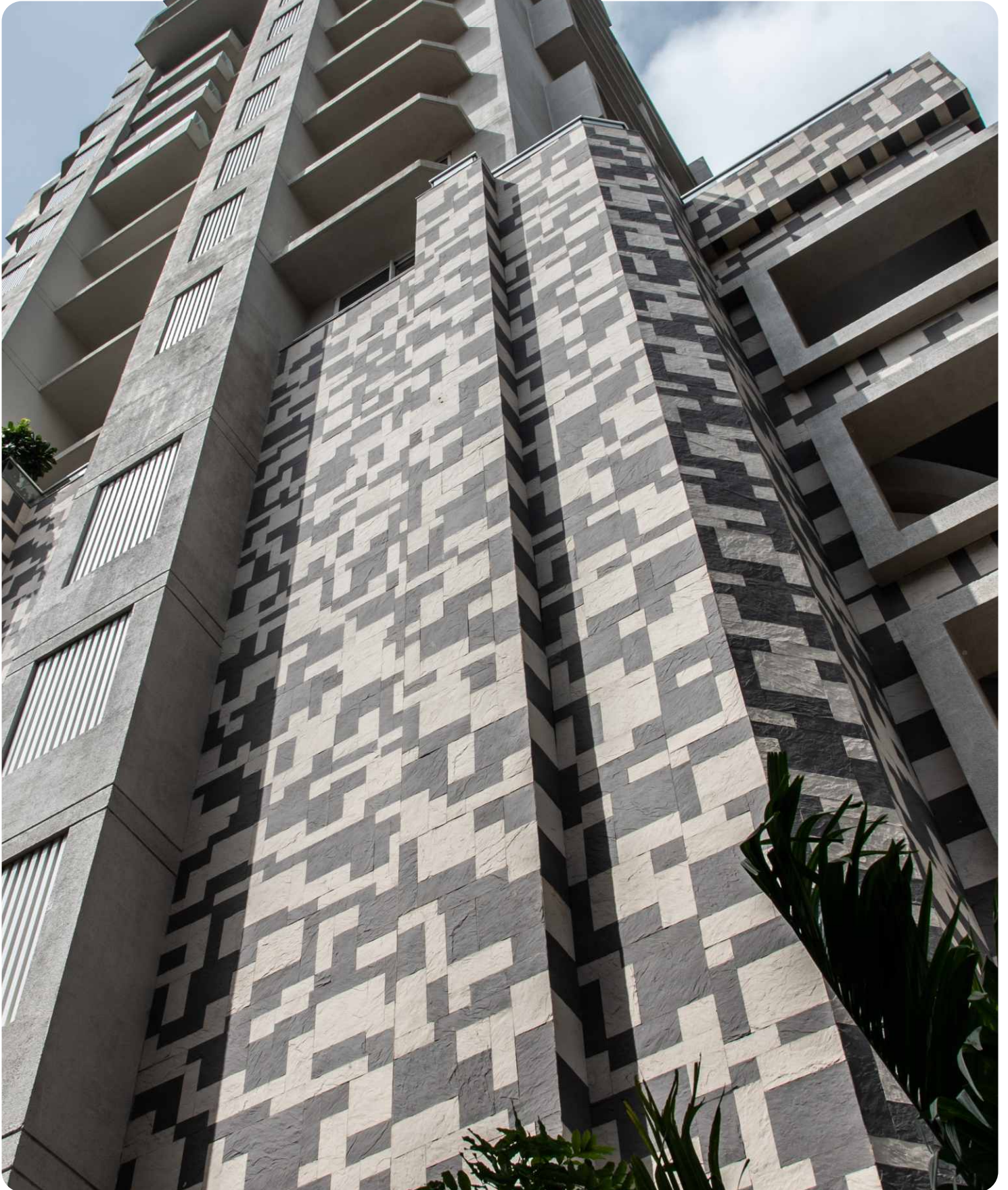
* Available only against special order with sufficient lead time and MOQ.

Images are for representation purpose only. Actual product shades may vary.



MCM Slate Stone

Has unique surface pattern characterised by hardness, streak & random variations in texture giving a rustic look to your spaces.





MCM OASIS STONE

Size (mm): 1200X600



OASIS STONE WIND



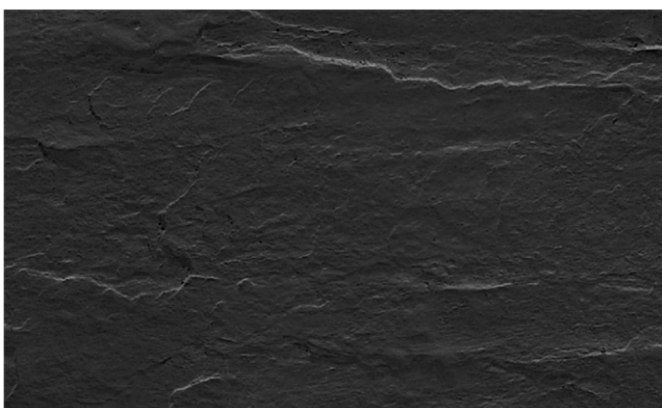
OASIS STONE RAIN



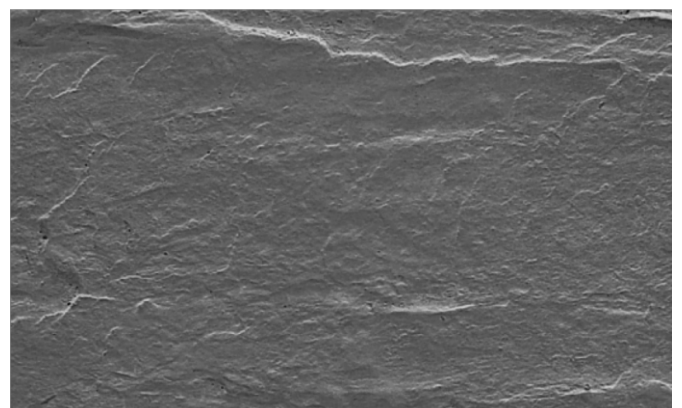
OASIS STONE FOG



025



043

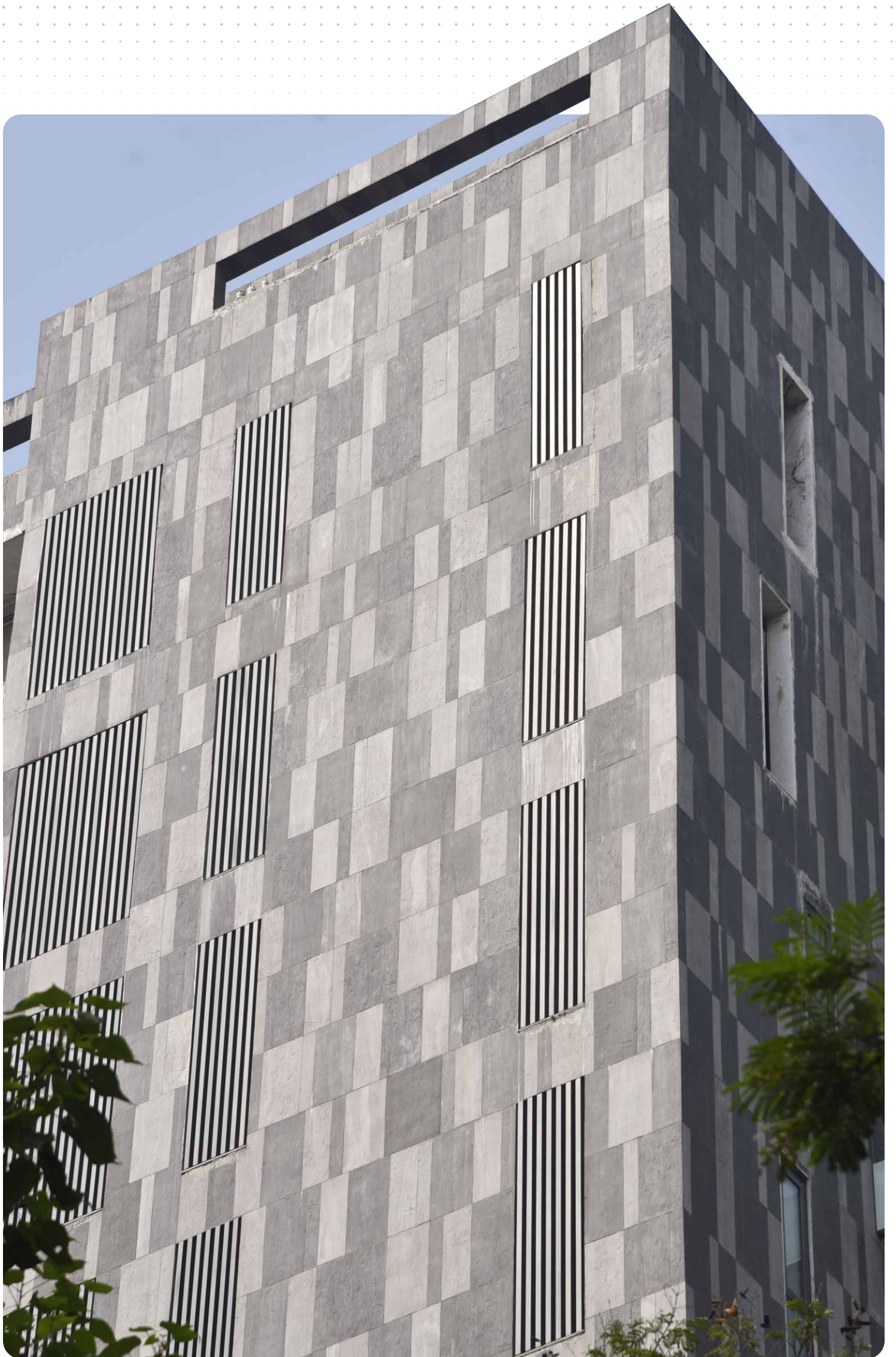


221

Note: Colour variation and gradation in every batch is a natural feature and part of our manufacturing process. These variations add to the overall character of MCM.

* Available only against special order with sufficient lead time and MOQ.

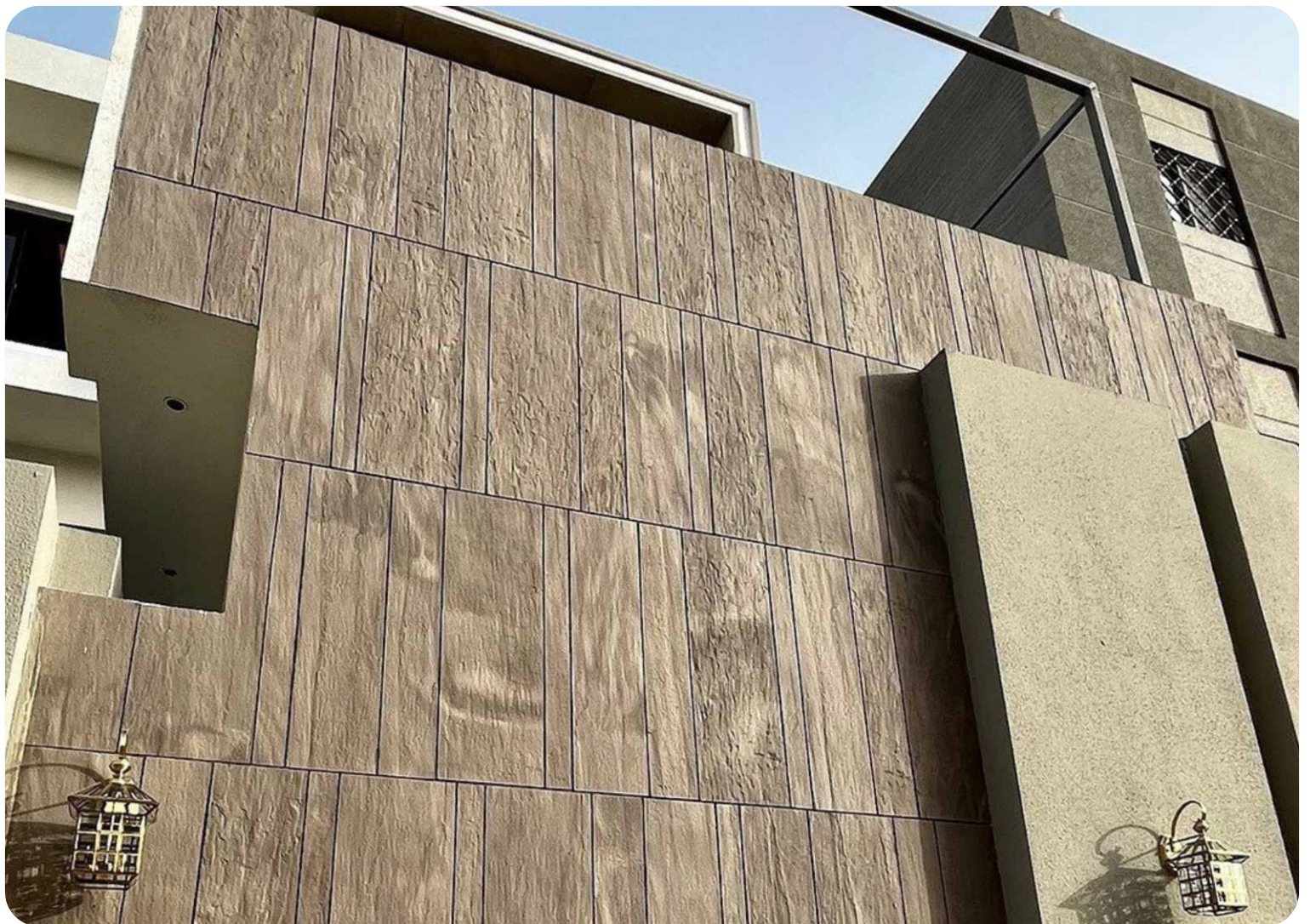
Images are for representation purpose only. Actual product shades may vary.





MCM Oasis Stone

Has inherited the rugged surface irregularities from its natural counterpart.





MCM TRAVERTINE

Size (mm): 1200X600



052053



031YZD



052KZ



Travertine Andes Yellow*



Travertine Andes Red*



Travertine Andes Grey*



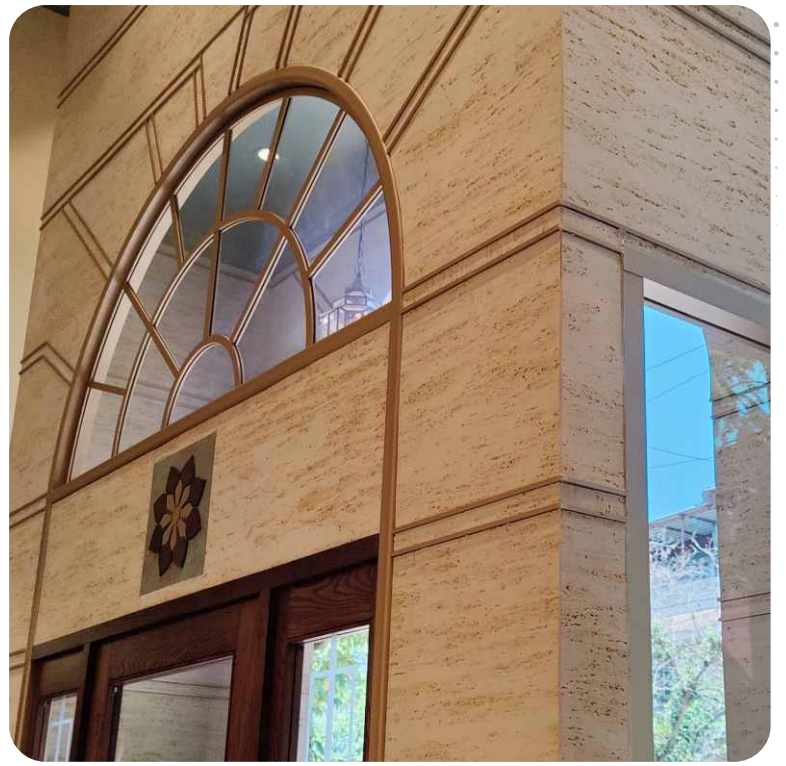
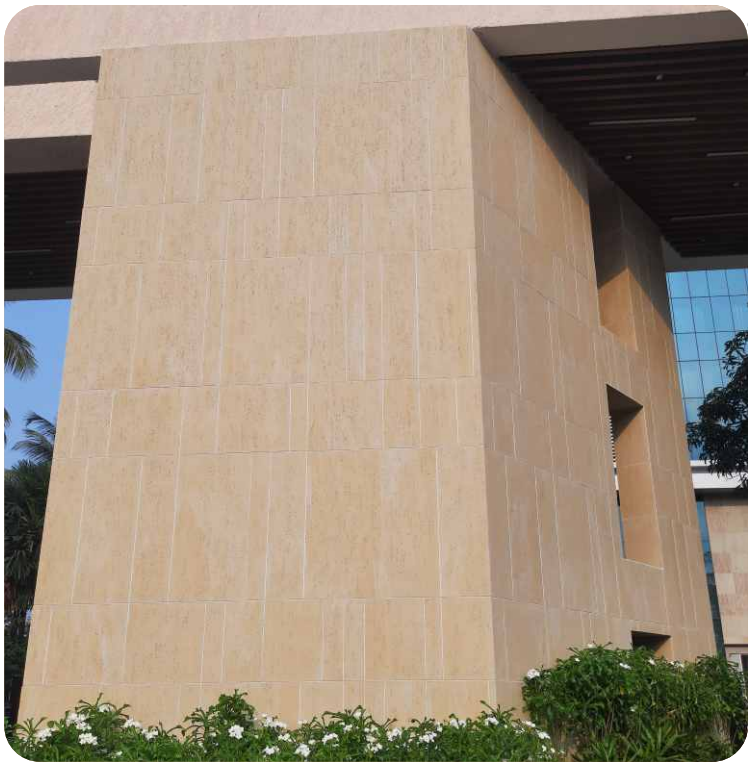
Travertine Andes Gold*

Note: Colour variation and gradation in every batch is a natural feature and part of our manufacturing process. These variations add to the overall character of MCM. *Available only against special order with sufficient lead time and MOQ. Images are for representation purpose only. Actual product shades may vary.

MCM Travertine Stone

With its magnificent seams, heterogeneous composition and random pores truly encapsulates the qualities of this natural stone.







MCM SANDSTONE

Size (mm): 1200X600



SANDSTONE CLOUD



SANDSTONE SUNSHINE*



SANDSTONE VISION*

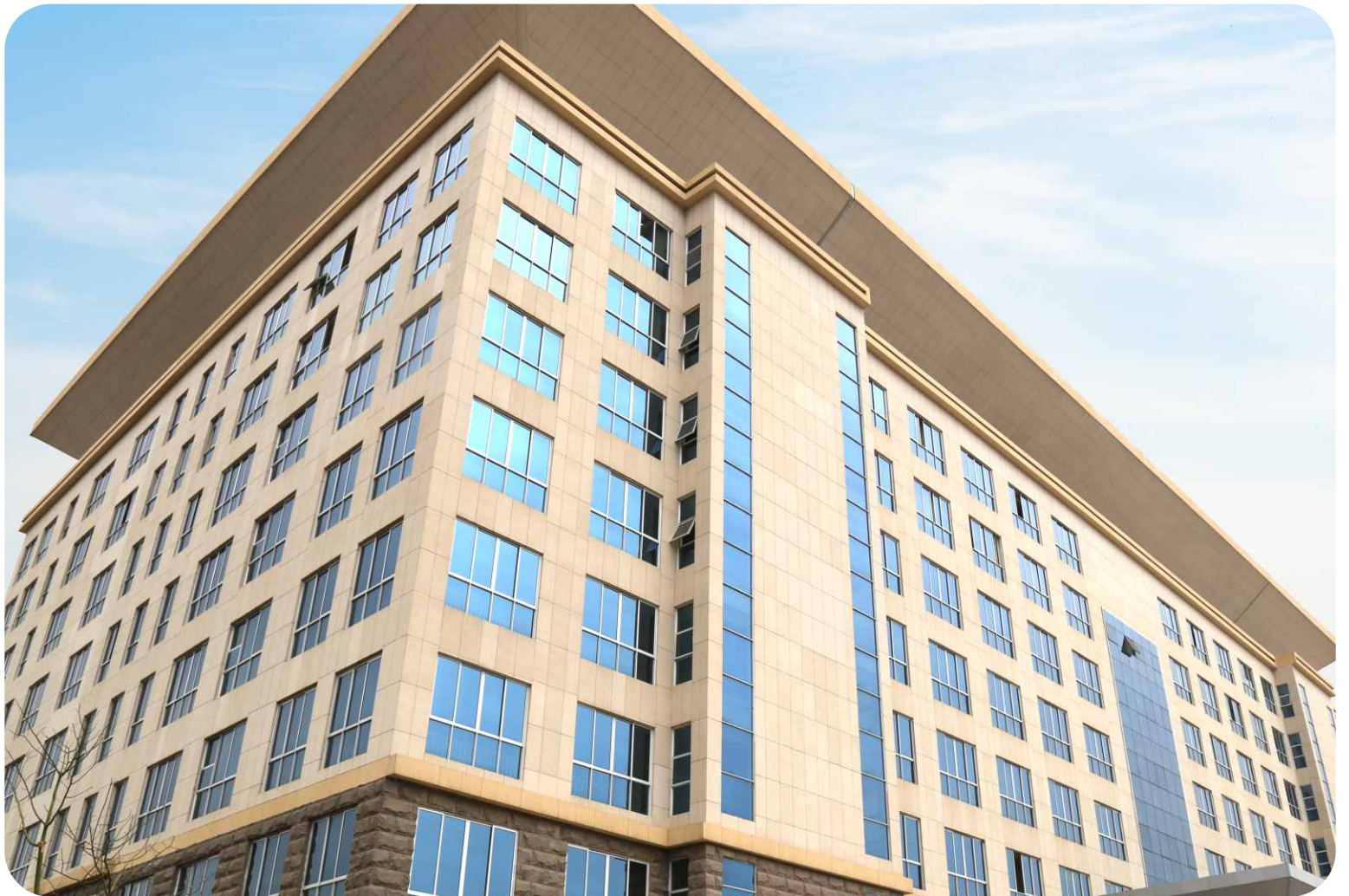


SANDSTONE AUSTRALIA ORANG*E

Note: Colour variation and gradation in every batch is a natural feature and part of our manufacturing process. These variations add to the overall character of MCM.

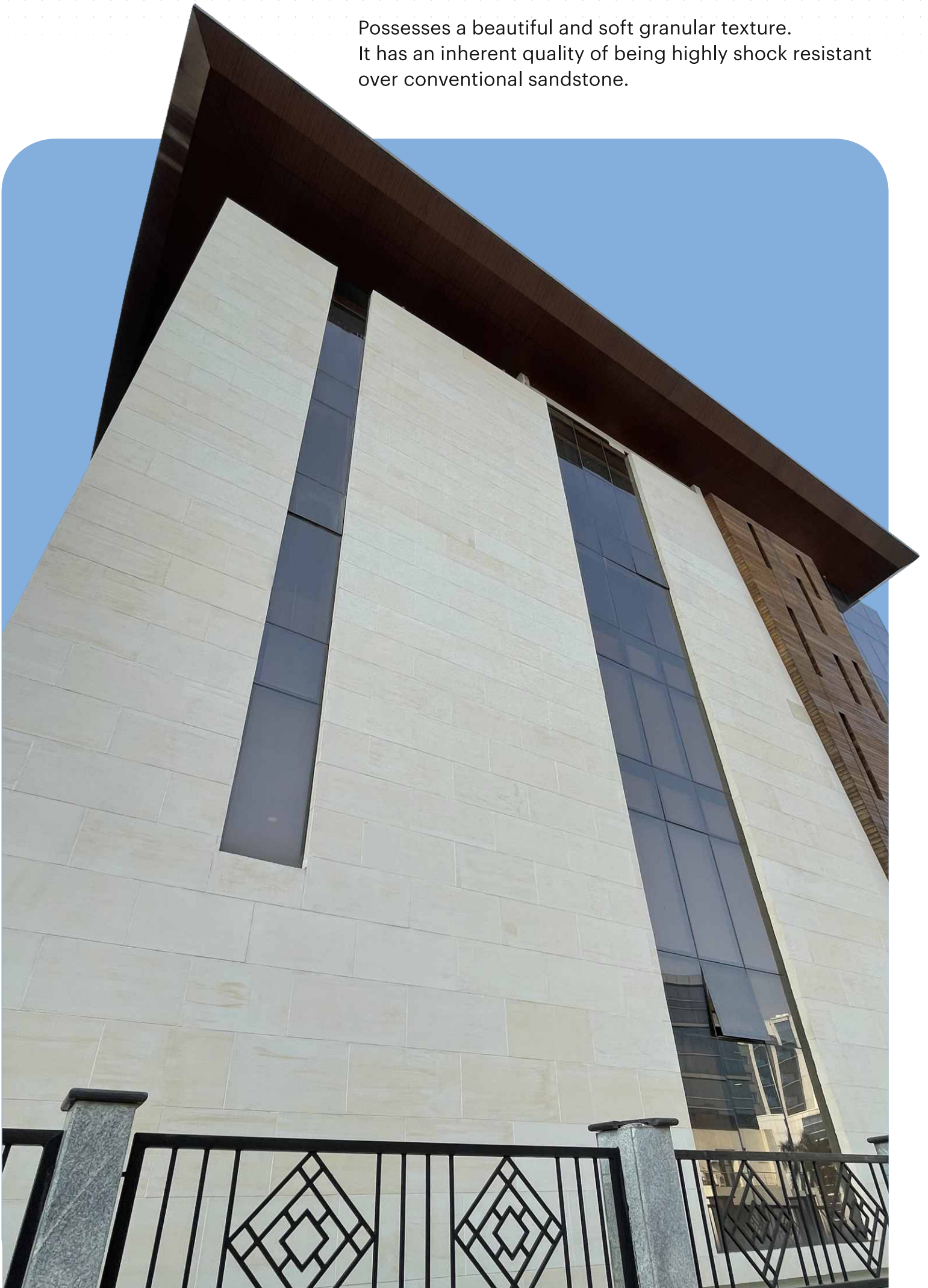
* Available only against special order with sufficient lead time and MOQ.

Images are for representation purpose only. Actual product shades may vary.



MCM Sandstone

Possesses a beautiful and soft granular texture.
It has an inherent quality of being highly shock resistant
over conventional sandstone.



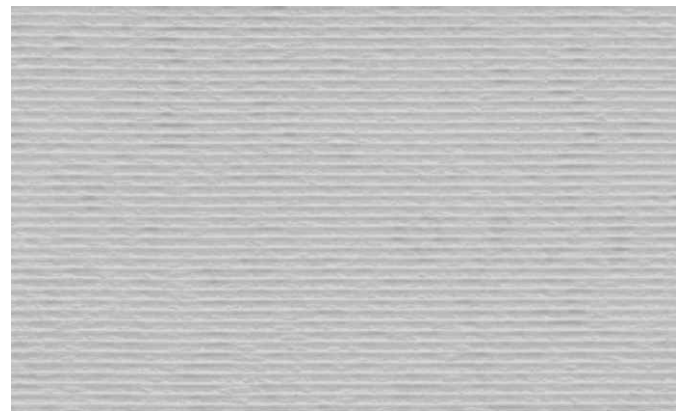


MCM CUTSTONE

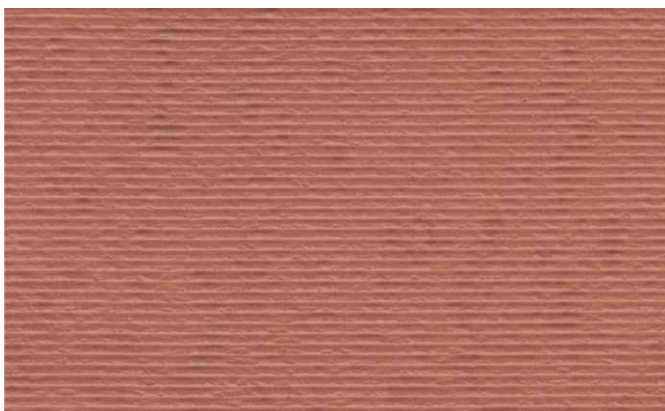
Size (mm): 1200X600



052



221

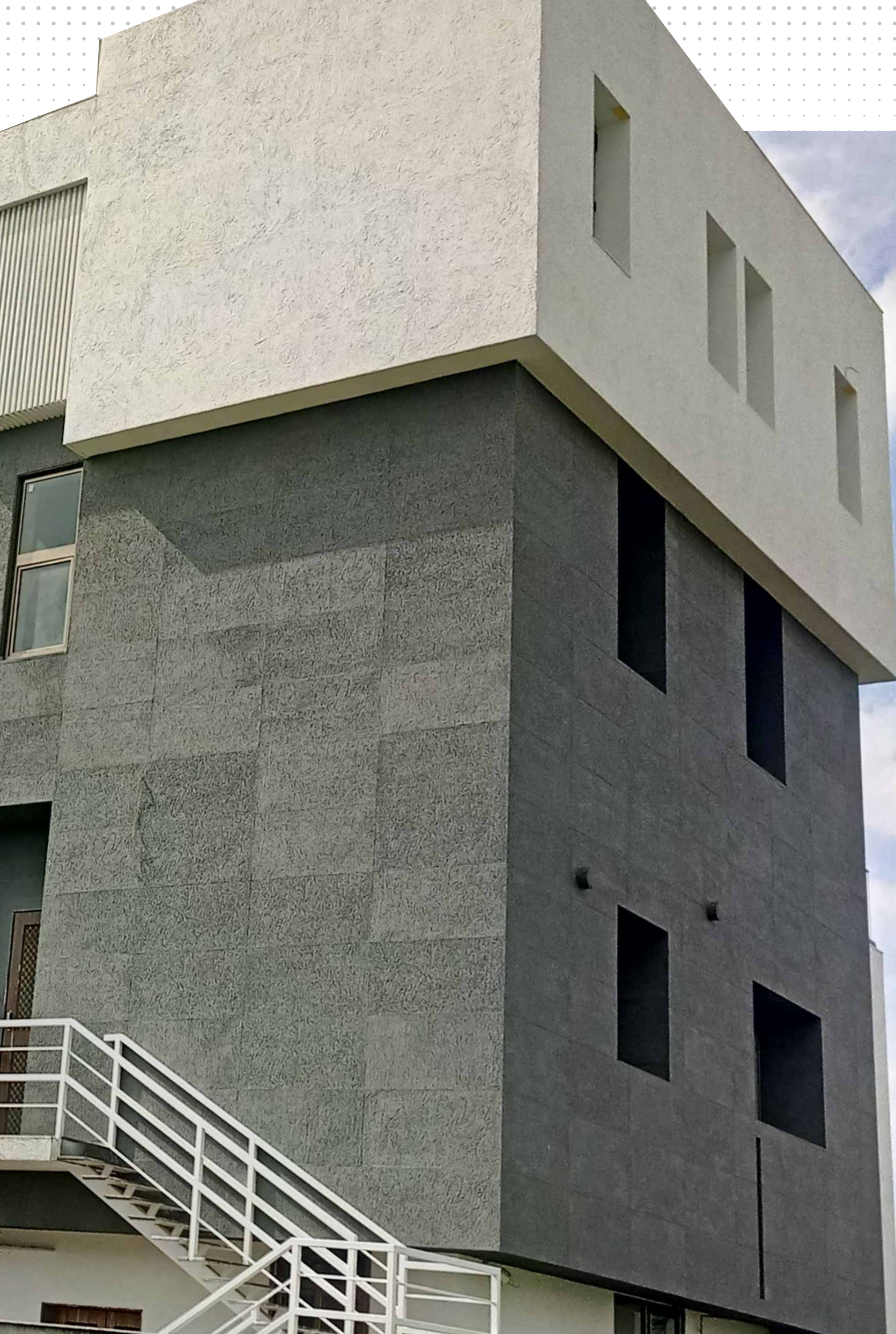


362

Note: Colour variation and gradation in every batch is a natural feature and part of our manufacturing process. These variations add to the overall character of MCM.

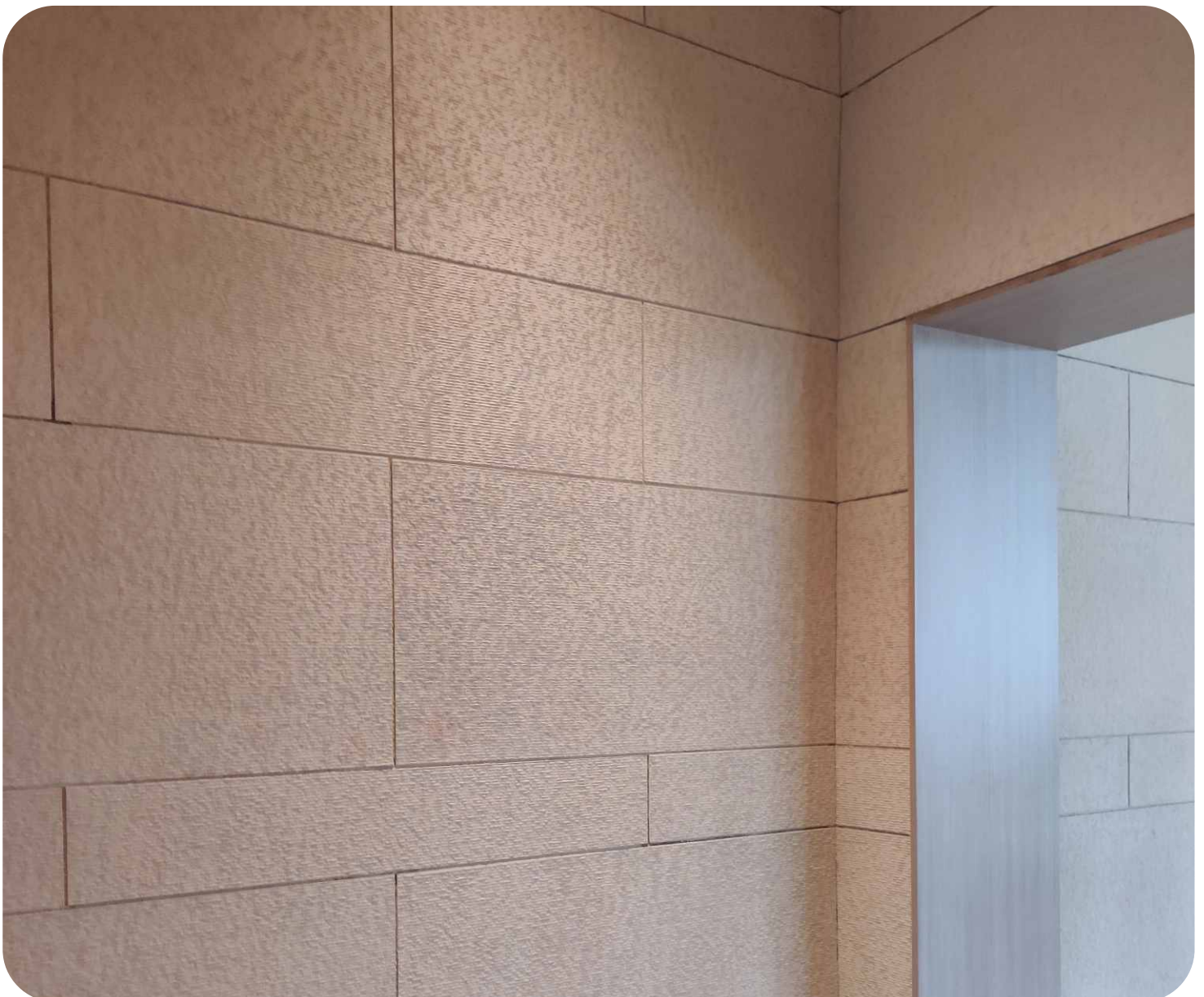
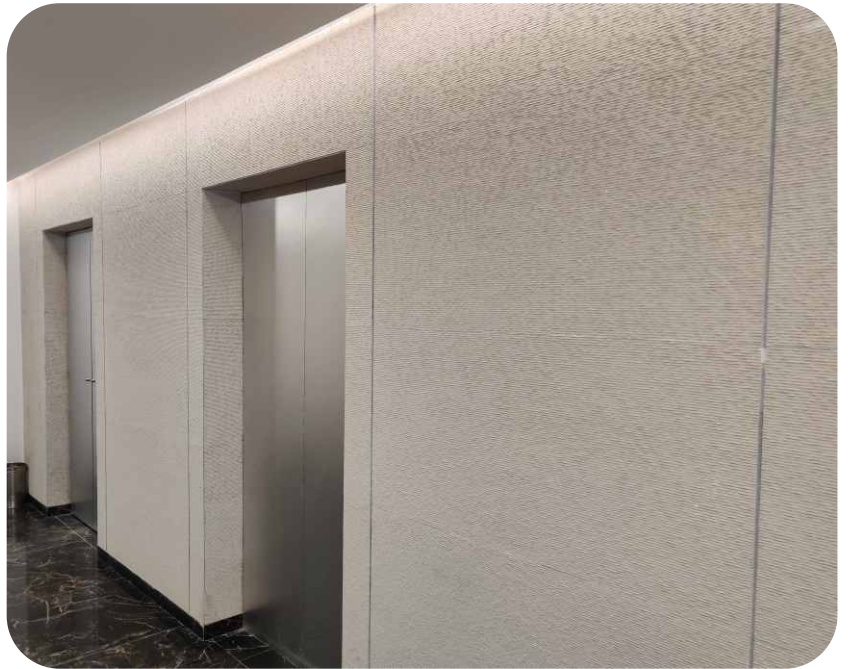
* Available only against special order with sufficient lead time and MOQ.

Images are for representation purpose only. Actual product shades may vary.



MCM Cut Stone

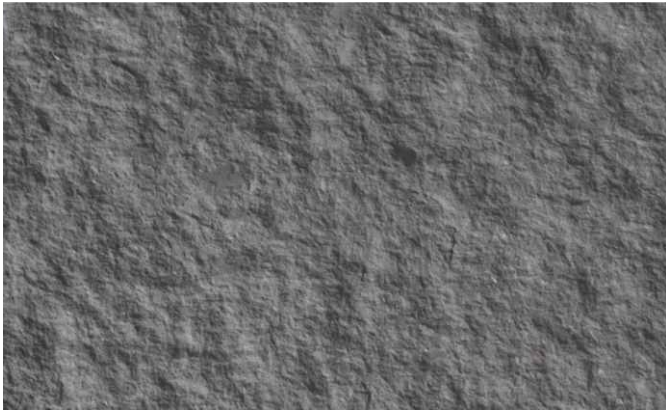
has its own special chiselled pattern that differs it from rest of the stones.



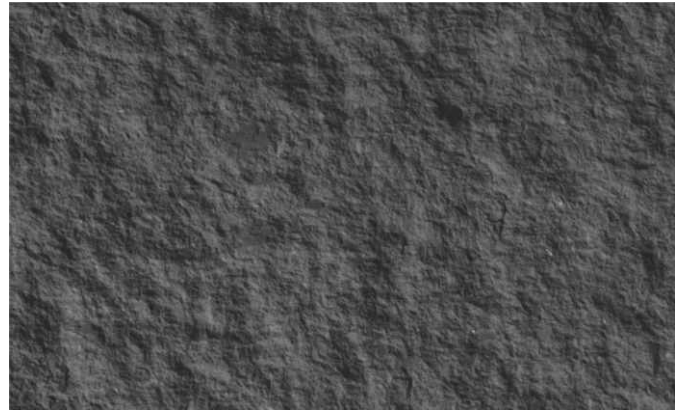


MCM GRANITE

Product Size (mm): 1200X600



209



317



308

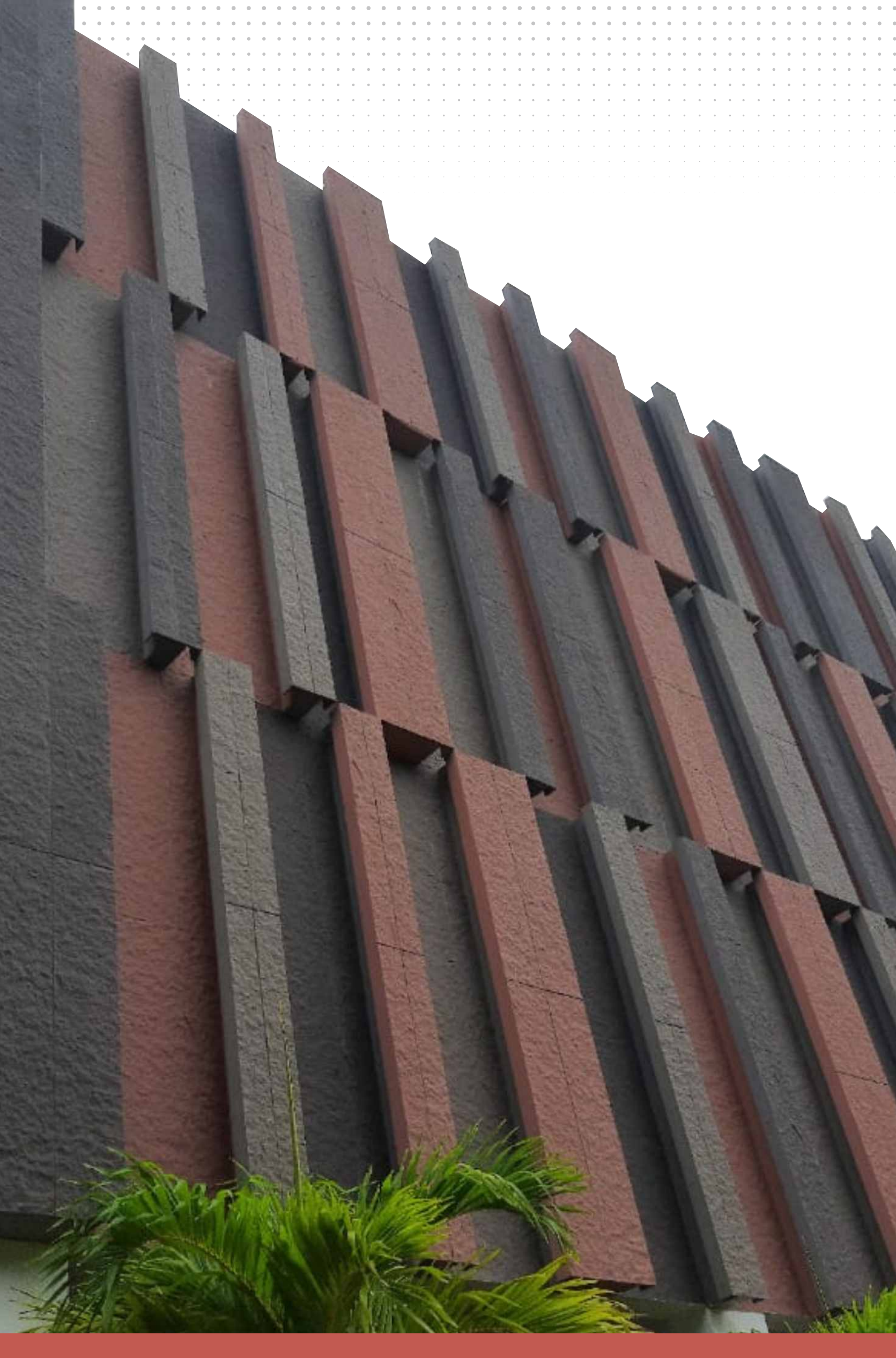


052

Note: Colour variation and gradation in every batch is a natural feature and part of our manufacturing process. These variations add to the overall character of MCM.

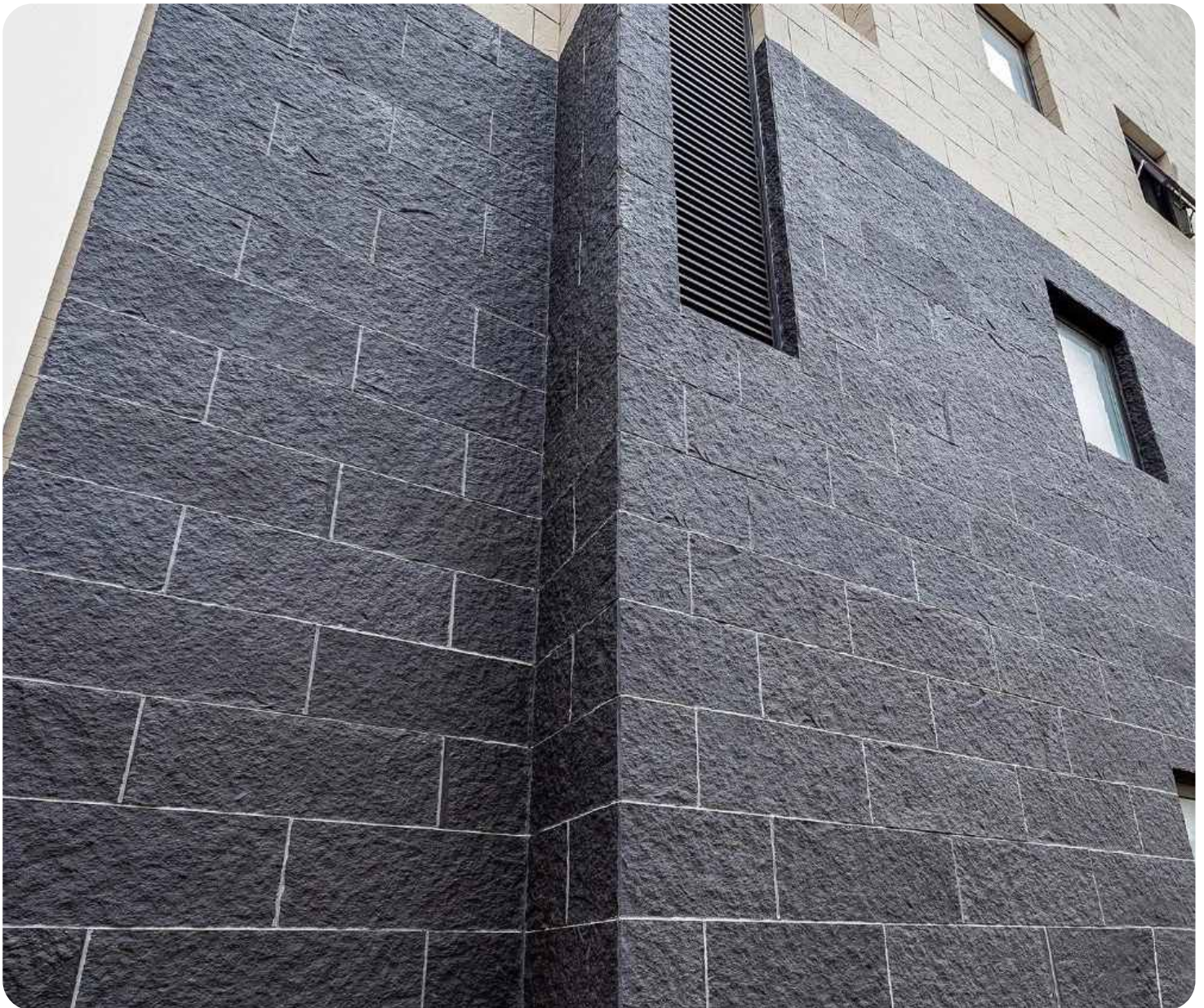
* Available only against special order with sufficient lead time and MOQ.

Images are for representation purpose only. Actual product shades may vary.



MCM Granite

symbolizes strength and longevity,
offering a very unique and rugged surface finish.



MCM GOLDEN LOLITE

Product Size (mm): 575X286



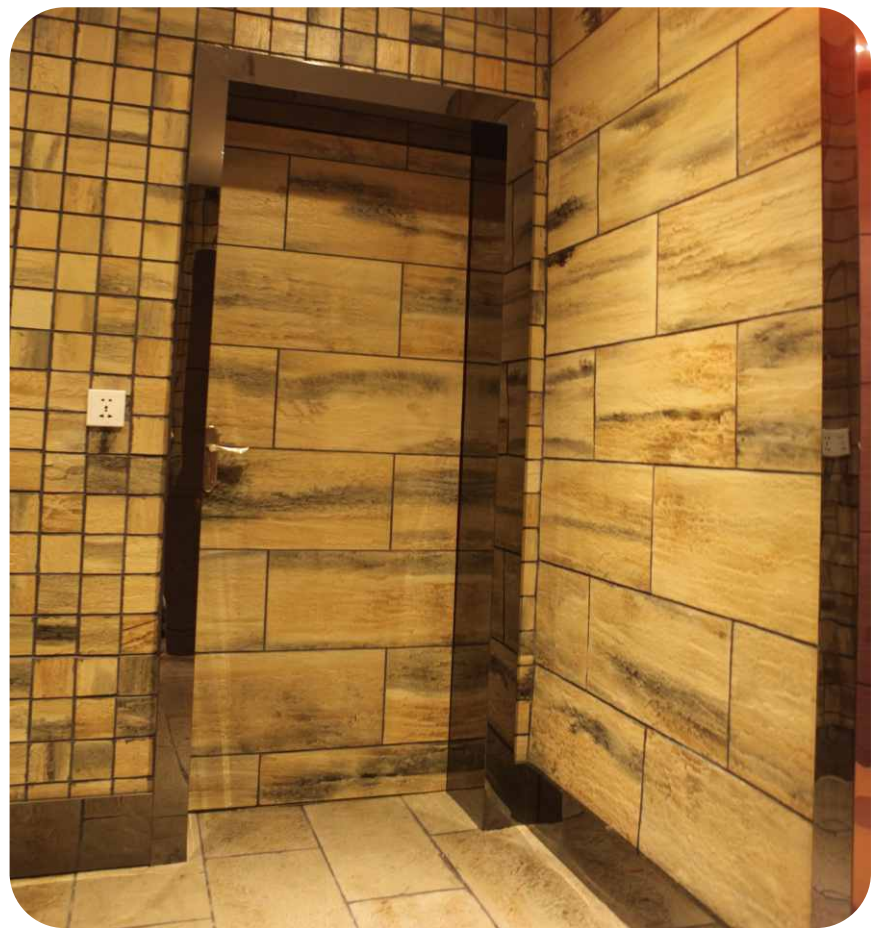
Note: Colour variation and gradation in every batch is a natural feature and part of our manufacturing process. These variations add to the overall character of MCM.

* Available only against special order with sufficient lead time and MOQ.

Images are for representation purpose only. Actual product shades may vary.

MCM INK PAINTING STONE

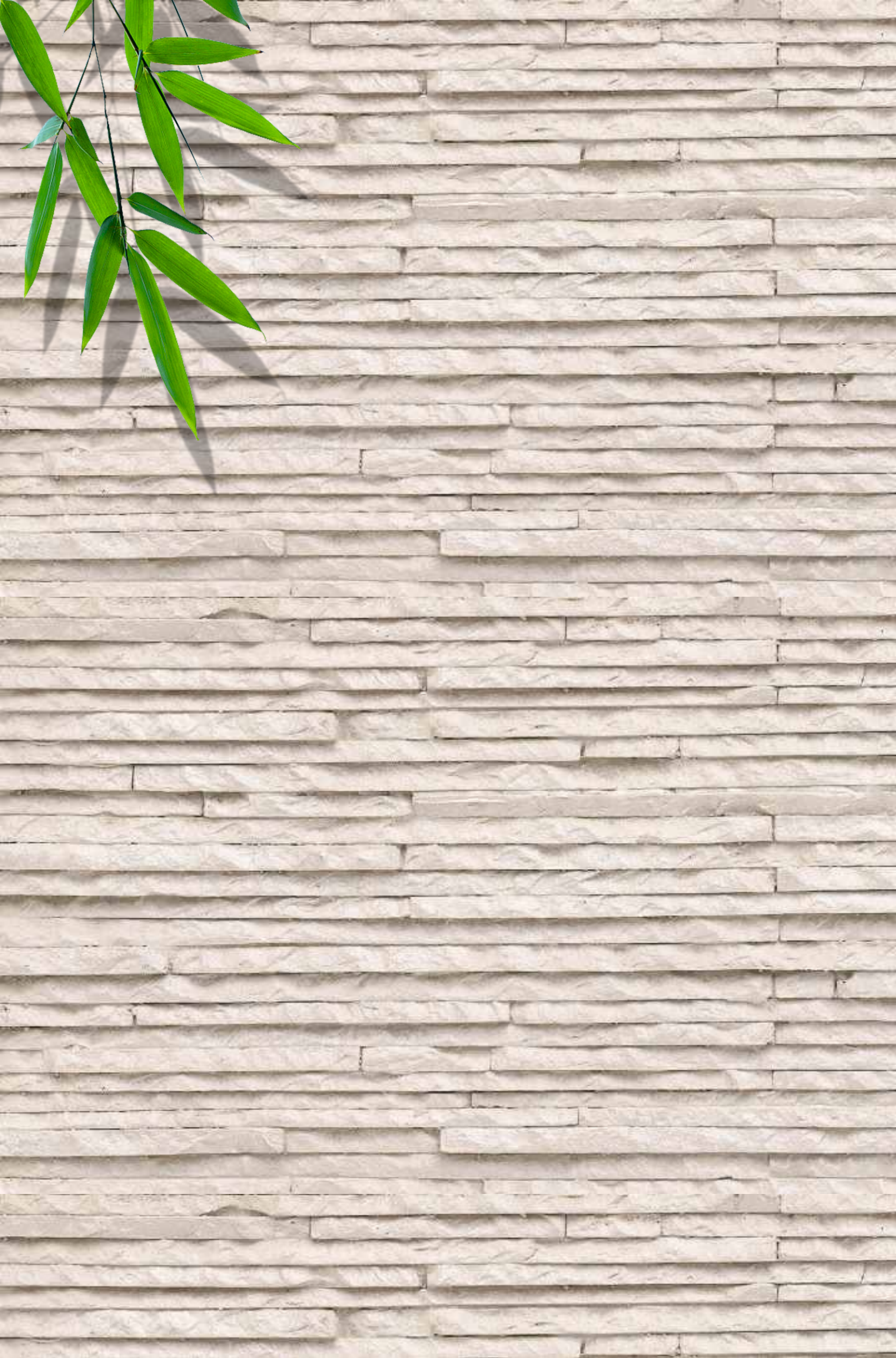
Product Size (mm): 575X286



Note: Colour variation and gradation in every batch is a natural feature and part of our manufacturing process. These variations add to the overall character of MCM.

* Available only against special order with sufficient lead time and MOQ.

Images are for representation purpose only. Actual product shades may vary.



MCM INFINITI STONE

Size (mm): 600X300



058



043



052



031*

Note: Colour variation and gradation in every batch is a natural feature and part of our manufacturing process. These variations add to the overall character of MCM.

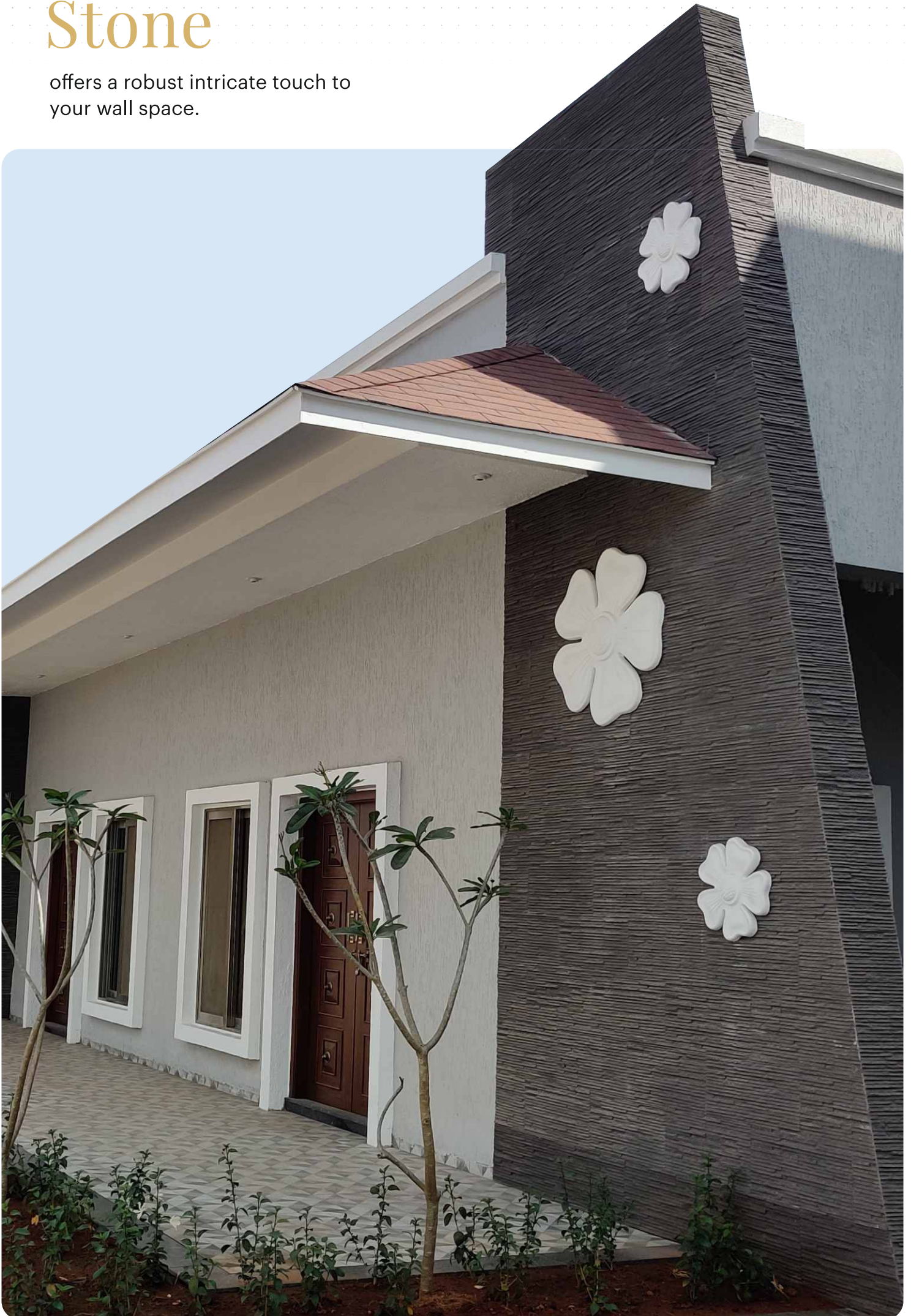
* Available only against special order with sufficient lead time and MOQ.

Images are for representation purpose only. Actual product shades may vary.



MCM Infiniti Stone

offers a robust intricate touch to your wall space.





MCM 35 PIECE STACK STONE

Size (mm): 600X300



315



206

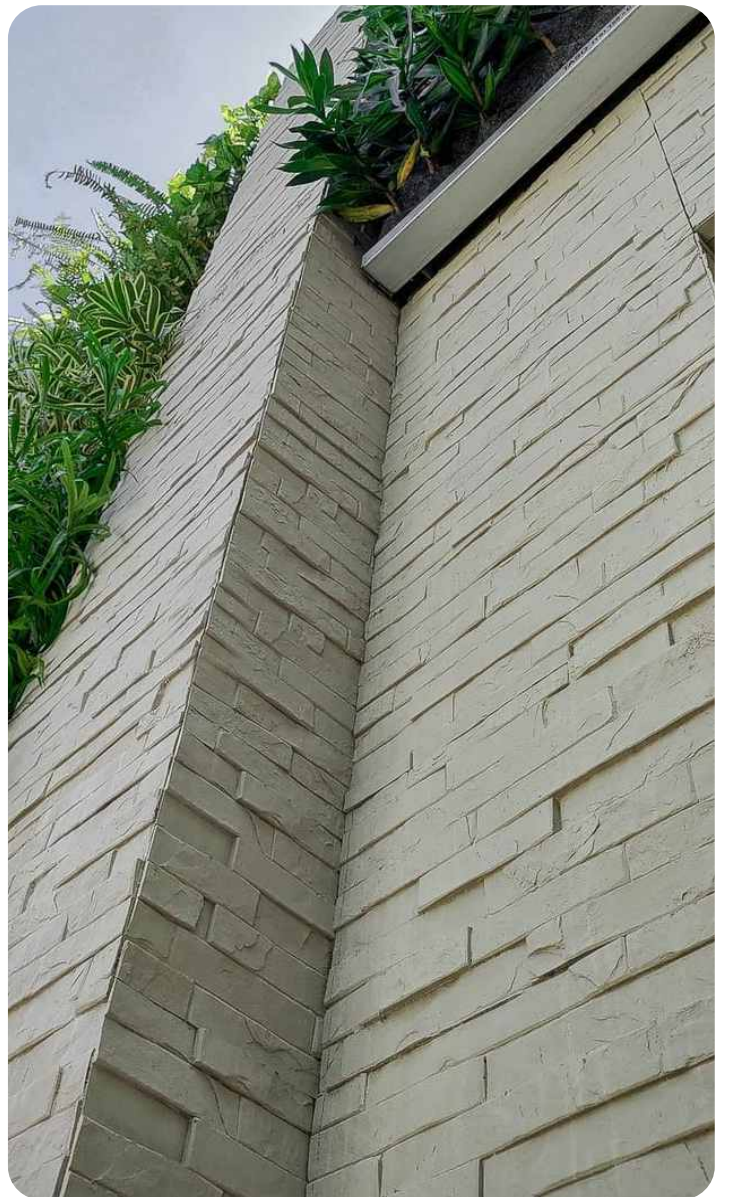
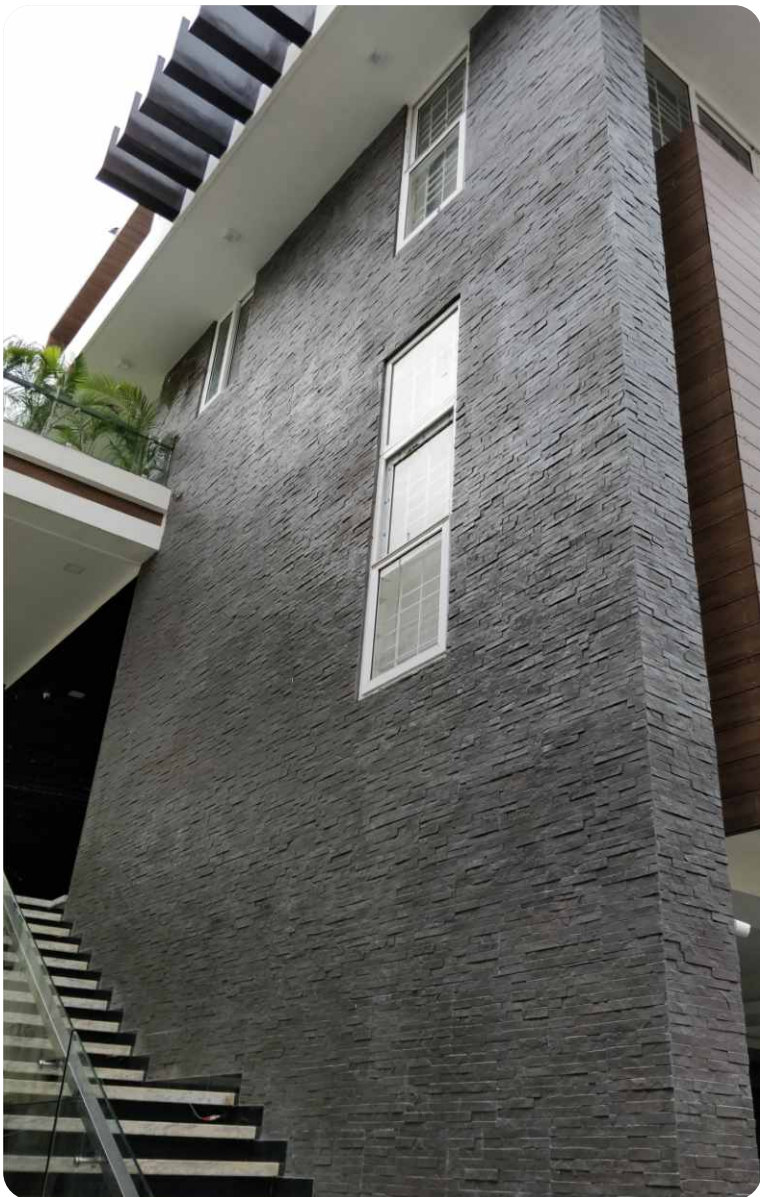


058

Note: Colour variation and gradation in every batch is a natural feature and part of our manufacturing process. These variations add to the overall character of MCM.

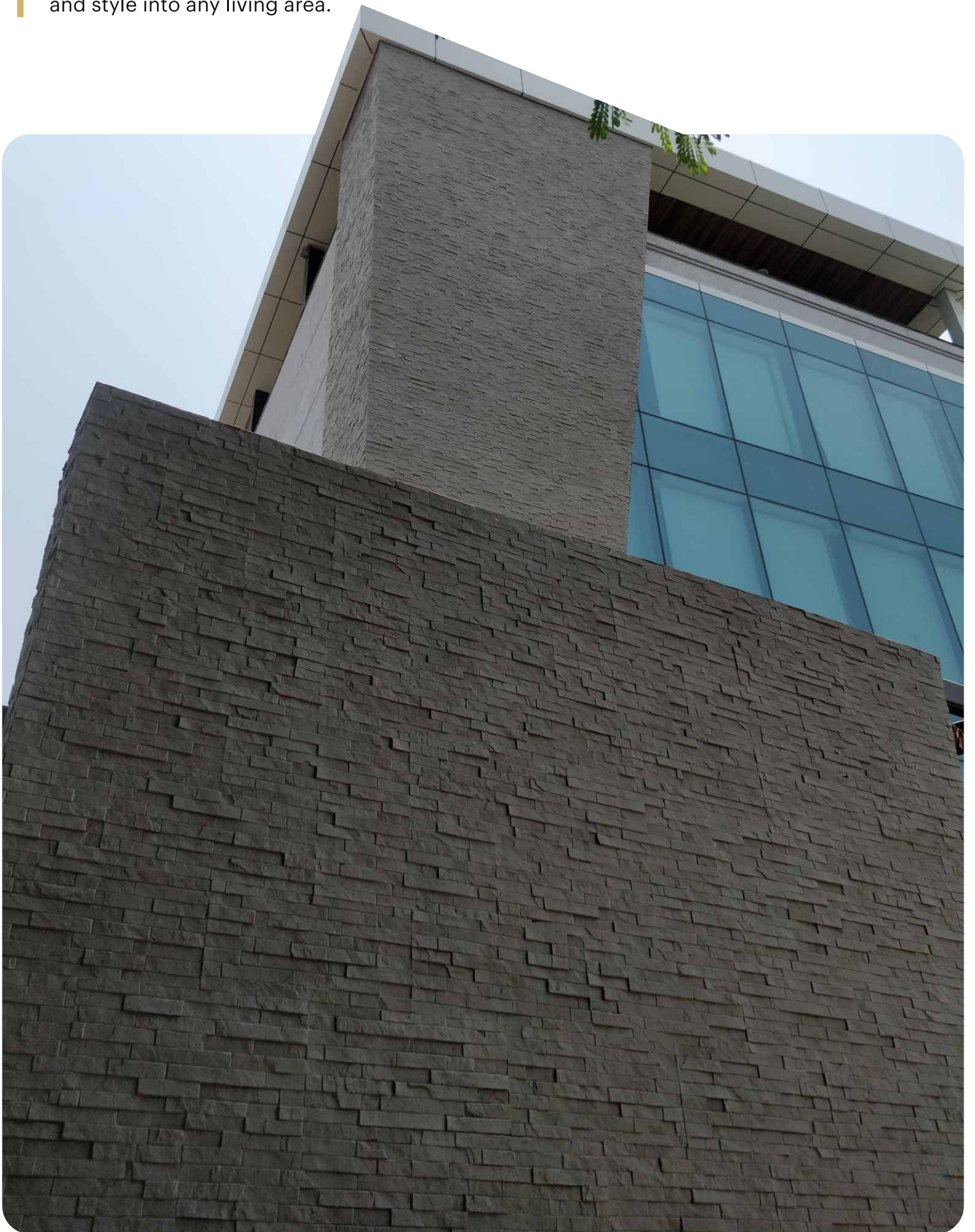
* Available only against special order with sufficient lead time and MOQ.

Images are for representation purpose only. Actual product shades may vary.



MCM 35 Piece Stack Stone

are a great way to bring natural beauty
and style into any living area.





MCM CROSSARD MUSHROOM STONE

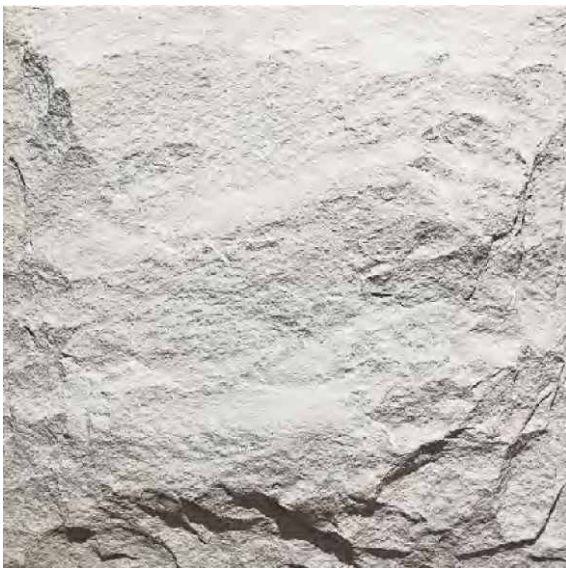
Size (mm): 800X800



221



043*



052*

Note: Colour variation and gradation in every batch is a natural feature and part of our manufacturing process. These variations add to the overall character of MCM.

* Available only against special order with sufficient lead time and MOQ.

Images are for representation purpose only. Actual product shades may vary.



MCM DEVINE MUSHROOM STONE*

Size (mm): 790X380



052*



221*



031*



043*

Note: Colour variation and gradation in every batch is a natural feature and part of our manufacturing process. These variations add to the overall character of MCM.

* Available only against special order with sufficient lead time and MOQ.

Images are for representation purpose only. Actual product shades may vary.

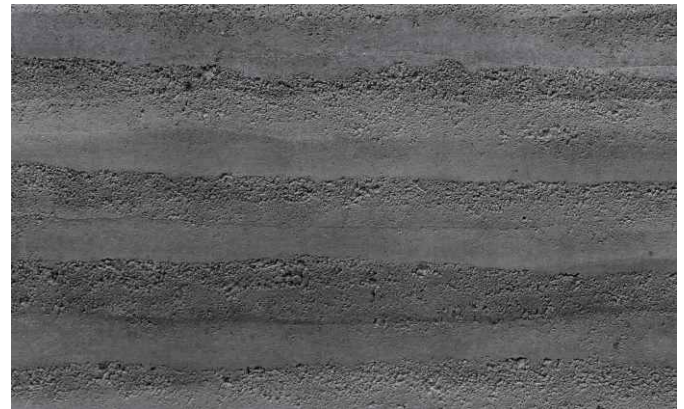


MCM RAMMED EARTH*

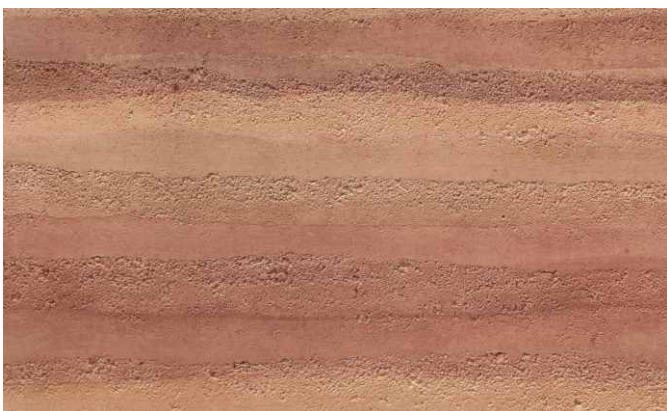
Product Size (mm): 1200X600



RAMMED EARTH WALL LIGHT GREY*



RAMMED EARTH WALL MEDIUM GREY*



RAMMED EARTH WALL RED*



RAMMED EARTH WALL YELLOW GREY*

Note: Colour variation and gradation in every batch is a natural feature and part of our manufacturing process. These variations add to the overall character of MCM.

* Available only against special order with sufficient lead time and MOQ.

Images are for representation purpose only. Actual product shades may vary.



MCM BRICK

Thin and pliable in application without losing the solemnity of clay bricks, each MCM brick has unique texture.





MCM A -SERIES FACING BRICK

Product Size (mm): 240X60



308317



087089



054058



221228



052*

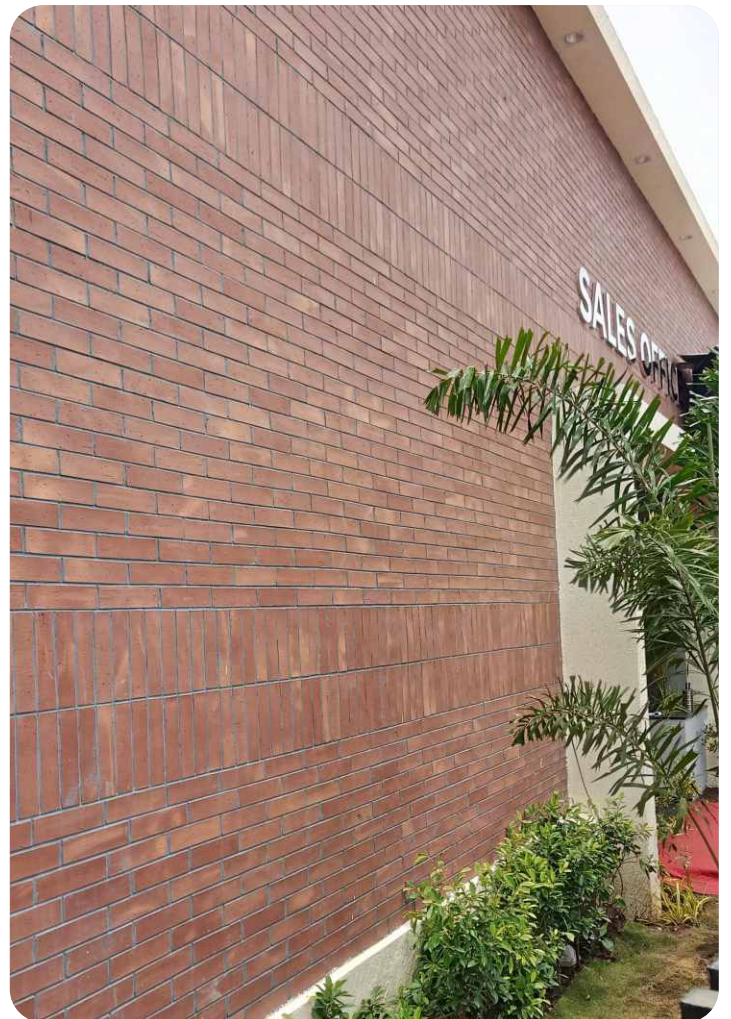
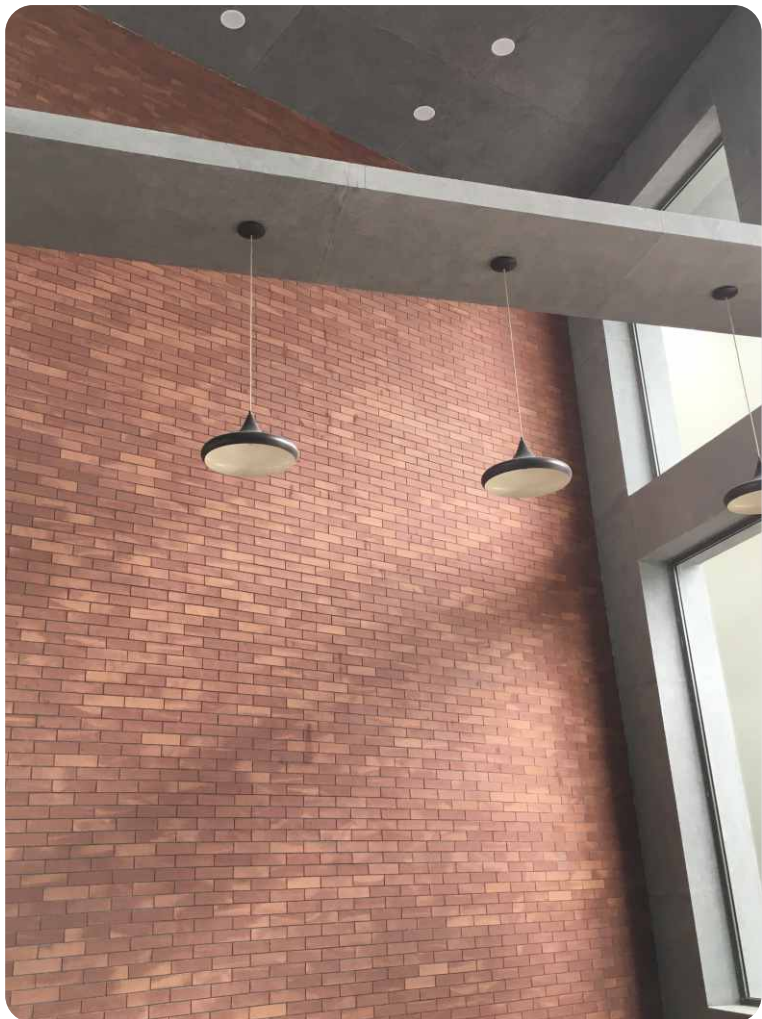
Note: Colour variation and gradation in every batch is a natural feature and part of our manufacturing process. These variations add to the overall character of MCM.

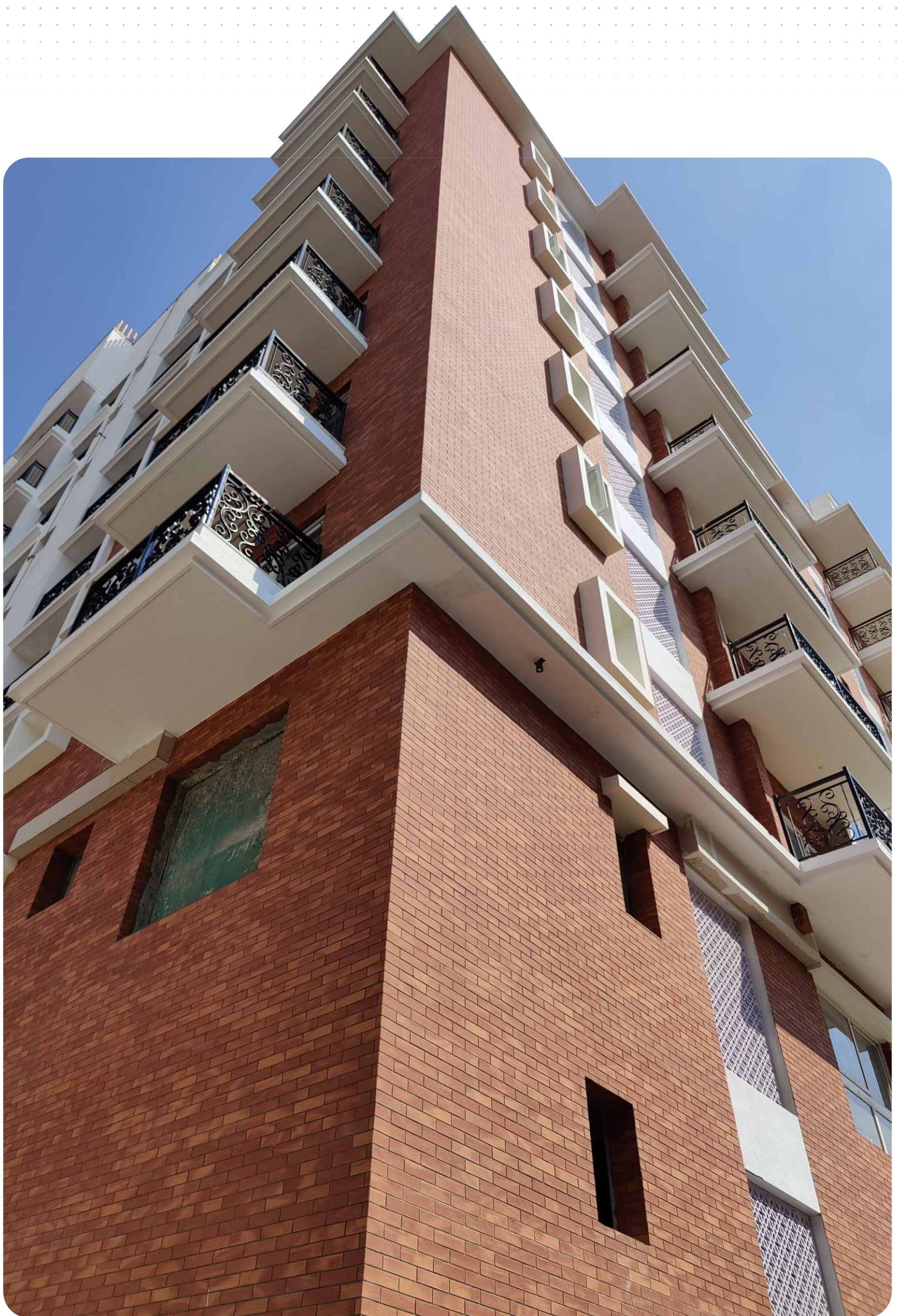
* Available only against special order with sufficient lead time and MOQ.

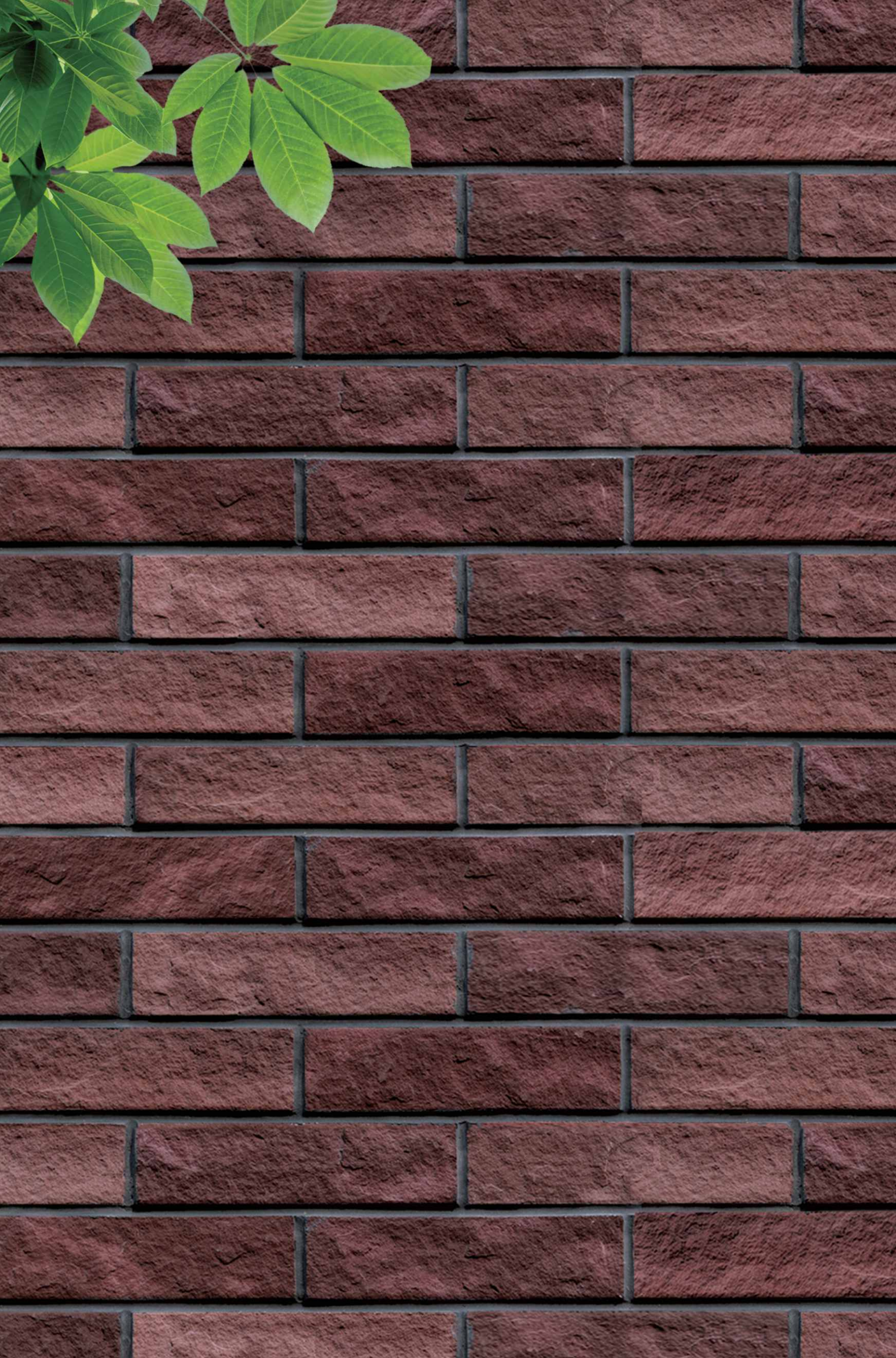
Images are for representation purpose only. Actual product shades may vary.

MCM A -Series Facing Brick

This series is perfect for all external and internal cladding requirements offering a raw, and rustic effect to your spaces with exposed and burnt brick patterns.







MCM K -SERIES FACING BRICK

Product Size (mm): 225X60



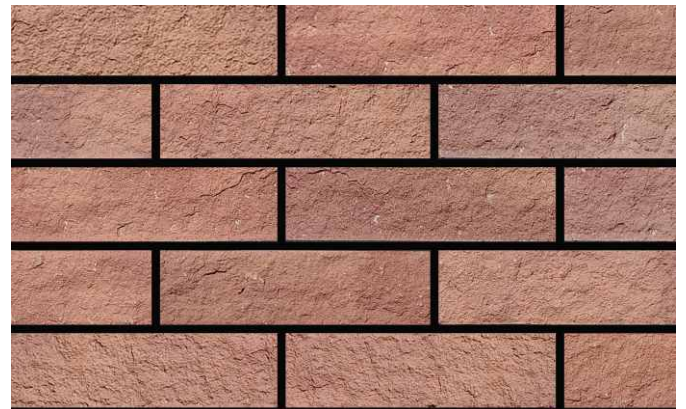
052



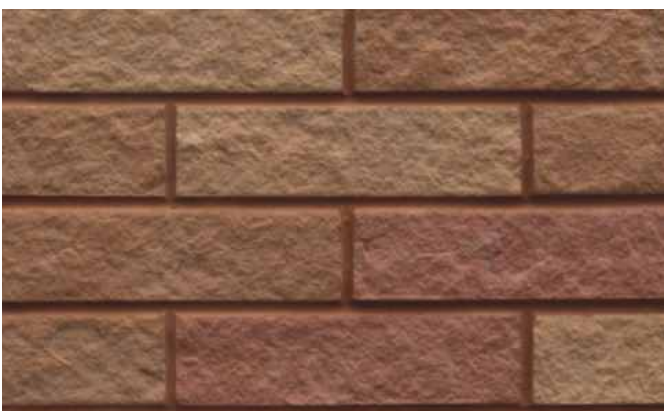
326C4



228030



090308



087C4*

Note: Colour variation and gradation in every batch is a natural feature and part of our manufacturing process. These variations add to the overall character of MCM.

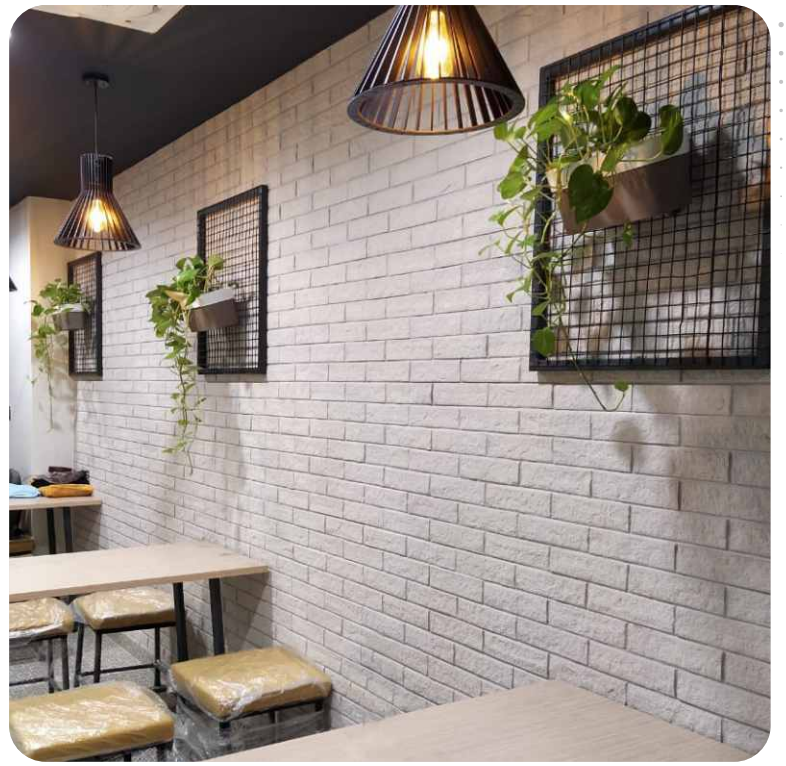
* Available only against special order with sufficient lead time and MOQ.

Images are for representation purpose only. Actual product shades may vary.

MCM K -Series Facing Brick

comes with the touch of natural irregularities and roughness, which is perfect for all external and internal cladding requirements.

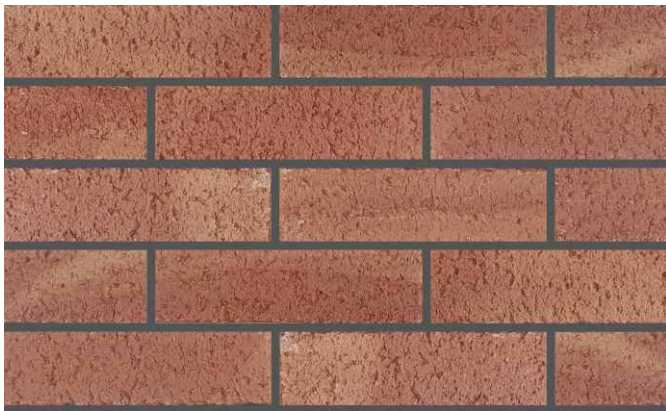






MCM R -SERIES FACING BRICK

Product Size (mm): 222X63



087089



308317



052053



052

Note: Colour variation and gradation in every batch is a natural feature and part of our manufacturing process. These variations add to the overall character of MCM.

* Available only against special order with sufficient lead time and MOQ.

Images are for representation purpose only. Actual product shades may vary.



MCM G -SERIES FACING BRICK

Product Size (mm): 230X59



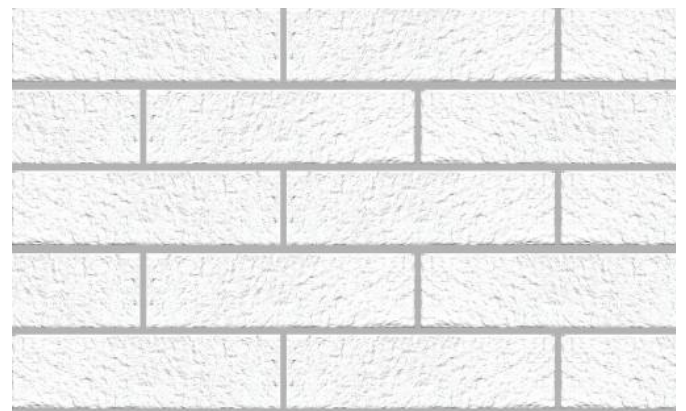
031043



0.43



025228



052*

Note: Colour variation and gradation in every batch is a natural feature and part of our manufacturing process. These variations add to the overall character of MCM.

* Available only against special order with sufficient lead time and MOQ.

Images are for representation purpose only. Actual product shades may vary.





MCM WOOD

is as natural and elegant as an original wood. It is significantly more flexible and maintenance-free when applied on both exterior and interior spaces



MCM WOOD

Product Size (mm): 900X180



ORIGINAL WOOD SUEZ



ORIGINAL WOOD RHINE



ORIGINAL WOOD VOLGA

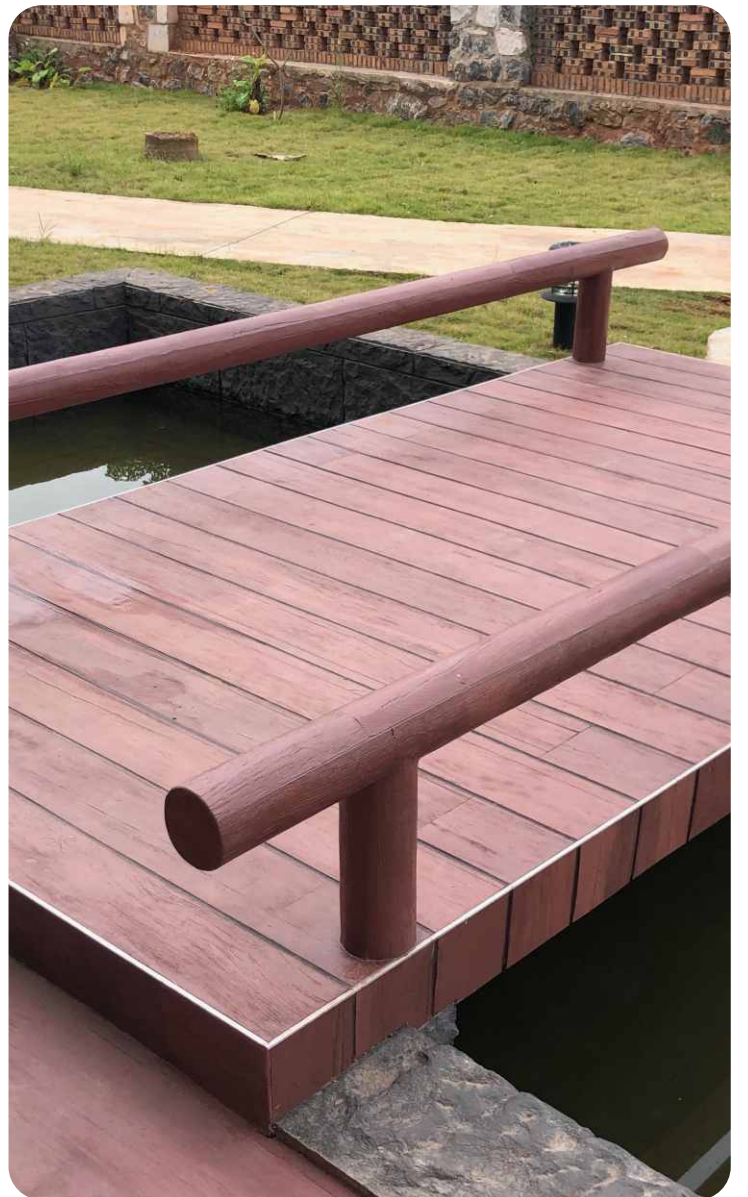


JAGGED WOOD OLYMPUS

Note: Colour variation and gradation in every batch is a natural feature and part of our manufacturing process. These variations add to the overall character of MCM.

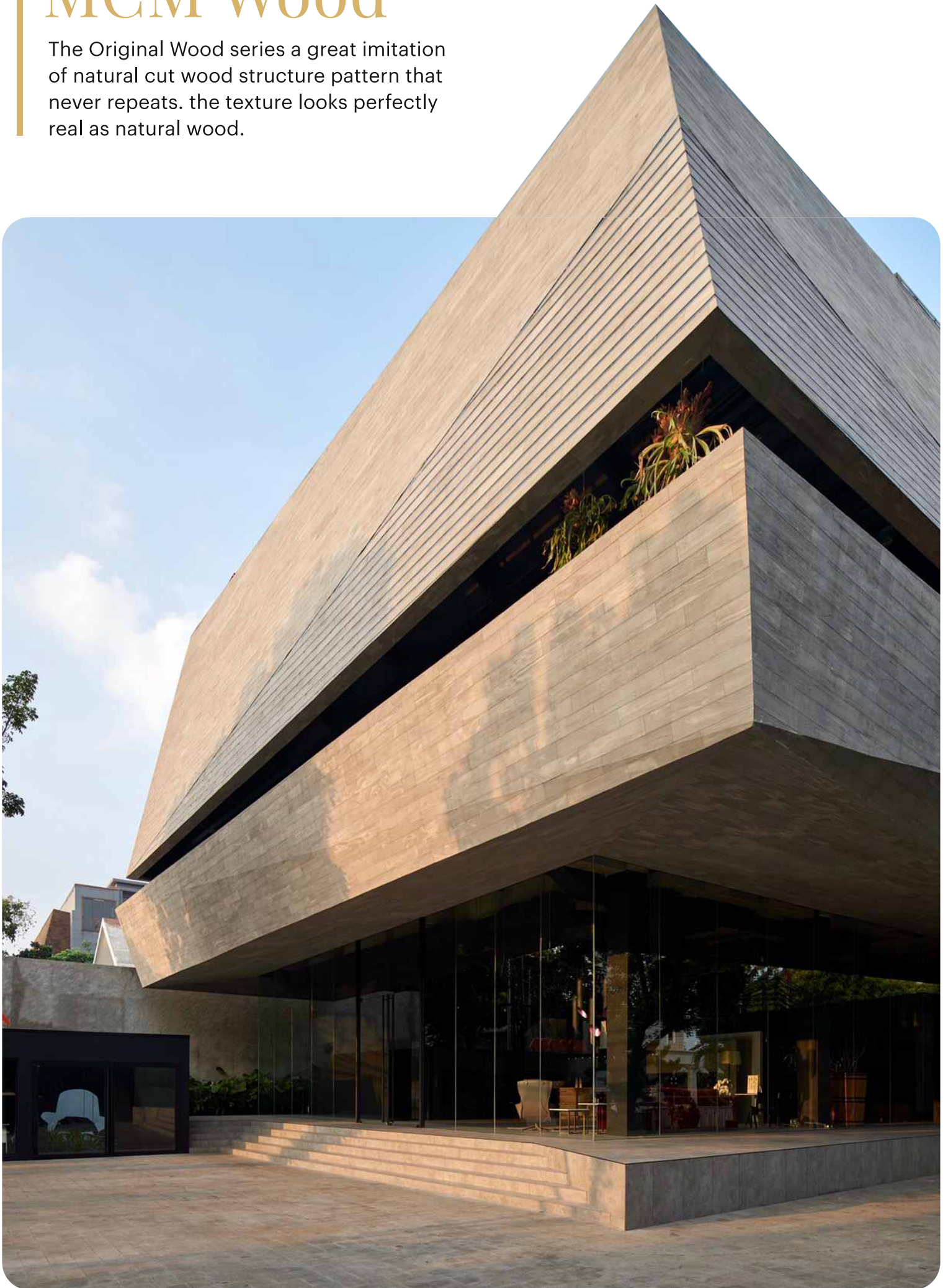
* Available only against special order with sufficient lead time and MOQ.

Images are for representation purpose only. Actual product shades may vary.



MCM Wood

The Original Wood series a great imitation of natural cut wood structure pattern that never repeats. the texture looks perfectly real as natural wood.



Installation Instruction

- MCM Panel can be applied using various types of PU, Cement, Polymer based adhesives. It is advised to refer adhesive manufacturers Instruction for use.
- Where grouting is needed it is suggested to use "Filling and Pointing" method to do the grouting.
- Grouting is recommended for high moisture application areas.
- MCM Panel can be easily cut using portable cutting machine hand grinders.
- Use a cloth or sponge with warm soap water to clean the extra adhesive during Installation, (Do not use harsh Chemicals).
- Wet areas such as bathrooms, Kitchen, etc. It is recommended to use resin based adhesive for product installation to avoid efflorescence. For all flooring, bathroom and kitchen wall, and wet area applications, the manufacturer recommends to apply protective coating.

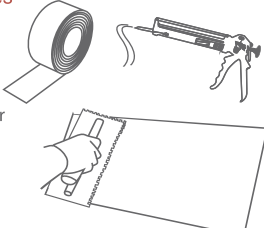
Directions to use

Step 1 - Surface Preparation



Wash surface areas, and allow to dry. Remove any debris, raised or uneven surfaces.

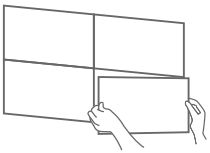
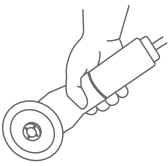
Step 2 - Adhesives or Glues



Various adhesives, light mortar for tiles and stones and / or double-sided adhesive tape are used for sustainable performance. Use the suitable adhesive / glues as per the substrate.

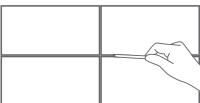

Step 3 - Cutting & Installation Steps

Marking: Use a lead pencil to mark cut line.
Cutting: Tile cutter to cut along line.



Install Flexi Clay tiles vertically or horizontally according to your choice.

Step 4 - Grouting Steps



Feed grout into the joint. You may also use a masking tape along the periphery of the tile to secure the edges from the grout, if needed.

Smooth metal rod

Step 5 - Cleaning Steps

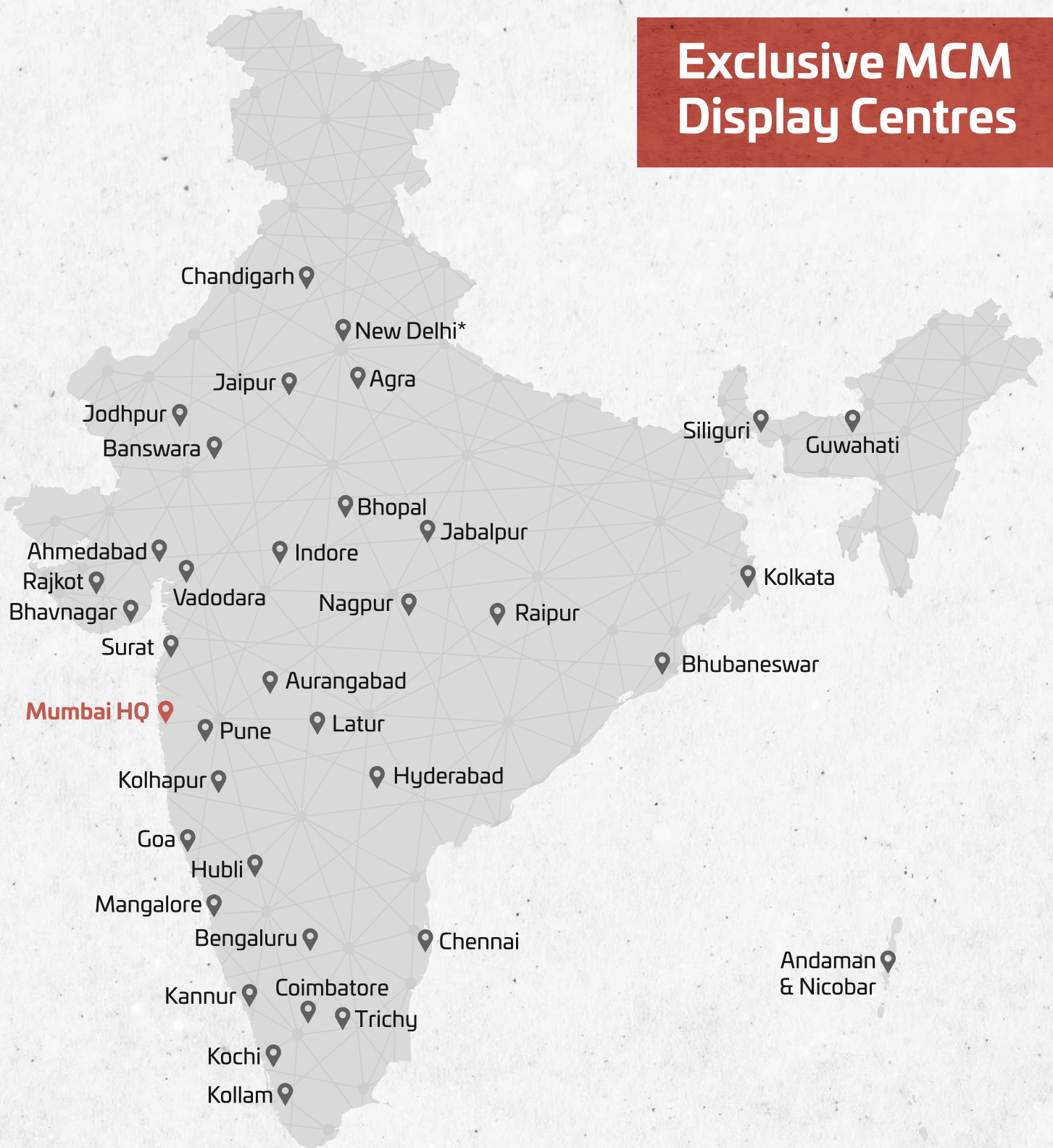


Use a scraper or a dry sponge to wipe off excess grout while half wet.

Note:

We recommend to apply protective coatings on mcm panels when installed in high traffic areas or floorings. This protective coating should be applied on mcm panels before installation with roller. Also, the mcm surface should be dry and free from dust

Exclusive MCM Display Centres



MCMFLEXI CLADDING INDIA PVT. LTD.

Head Office: #101-103, Damji Shamji Udyog Bhavan, Veera Desai Rd, Andheri West, Mumbai, Maharashtra - 400053

-  www.mcmcladding.com
-  info@mcmcladding.com
-  [/mcmcladdingindia](https://www.instagram.com/mcmcladdingindia)
-  [/mcmflexicladding](https://www.facebook.com/mcmflexicladding)
-  [/mcm-cladding](https://www.linkedin.com/company/mcm-cladding)
-  [/MCMCladding](https://www.youtube.com/MCMCladding)

