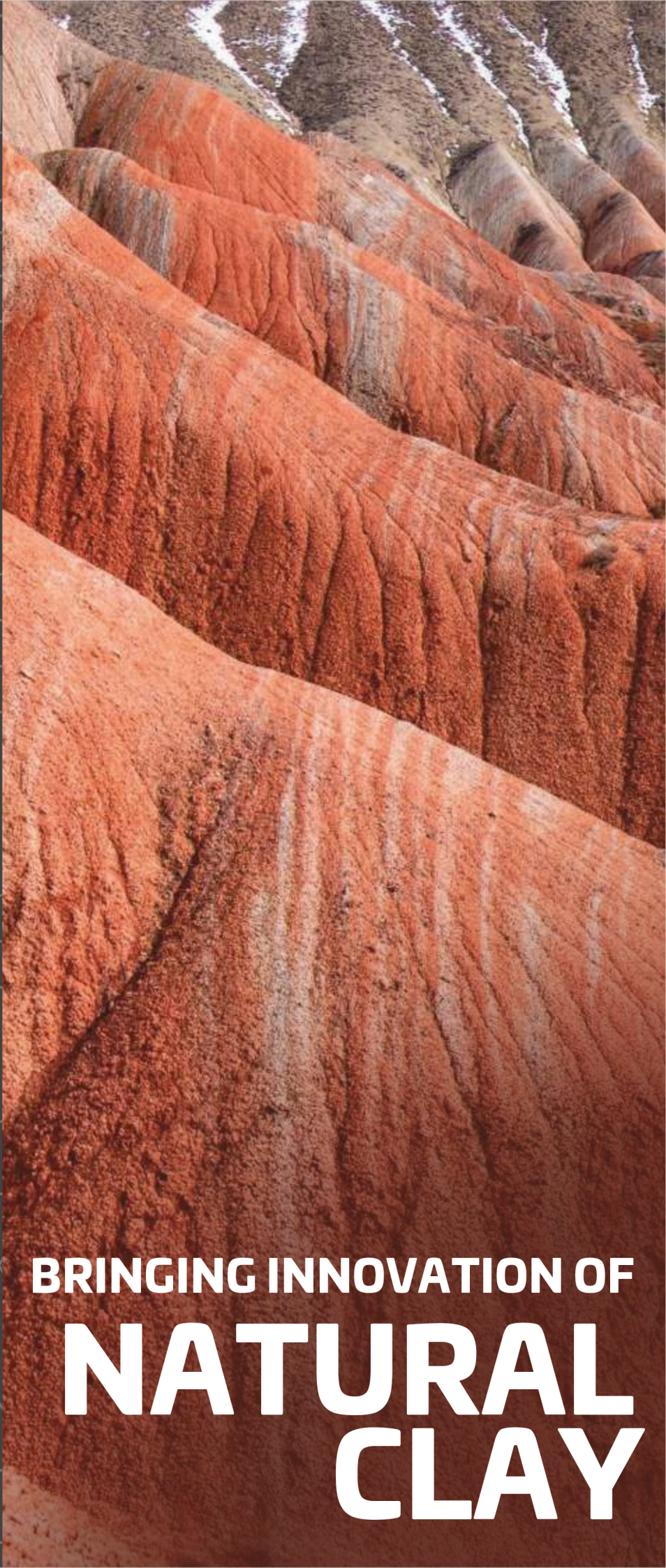
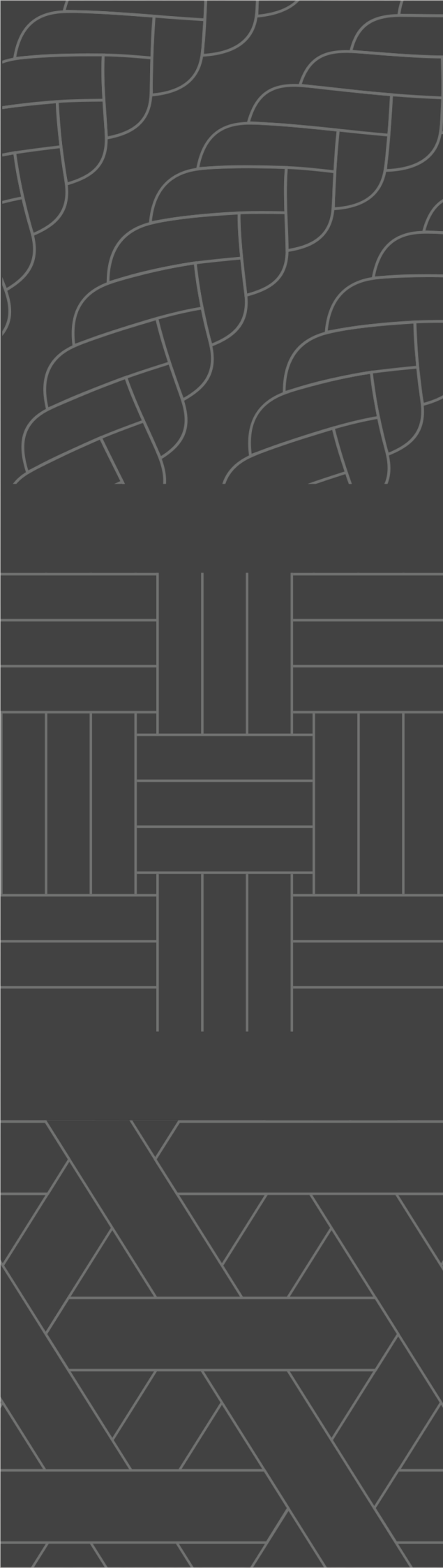


# ittimi™



## Crafted Interior Cladding





BRINGING INNOVATION OF  
**NATURAL  
CLAY**





## About Us

MCM Flexi Cladding India is a privately held company with its headquarters in Mumbai, India, and a strong presence across the nation, featuring exclusive product display centres. MCM Flexi Cladding proudly boasts a patented, revolutionary cladding technology offering high-quality and sustainable cladding products for both internal and external spaces.

Ittimi was born out of an incredible concoction of innovation, functionality, and superlative aesthetics. Adorned with designs and textures that elevate the senses, it is a range of unfired clay claddings painstakingly created for beautifying walls and ceilings.

The name 'ittimi' epitomizes the magic of clay and its myriad potential possibilities. Taking inspiration from the natural element—earth—this collection is as down-to-earth and super-elegant as it gets. It possesses the innate ability to breathe a great rush of life into your surroundings.

## Applications

Decorative ranges & ceiling.

(To be pasted using suitable MCM Adhesive)



Unfired  
Clay



Eco  
Friendly



Fire  
Resistant



Water  
Resistant



Light  
Weight



Paintable



Flexible



Long  
Lasting





Allow bliss and  
tranquility to assert their  
domination

{ ROPE  
WAVE



SDH





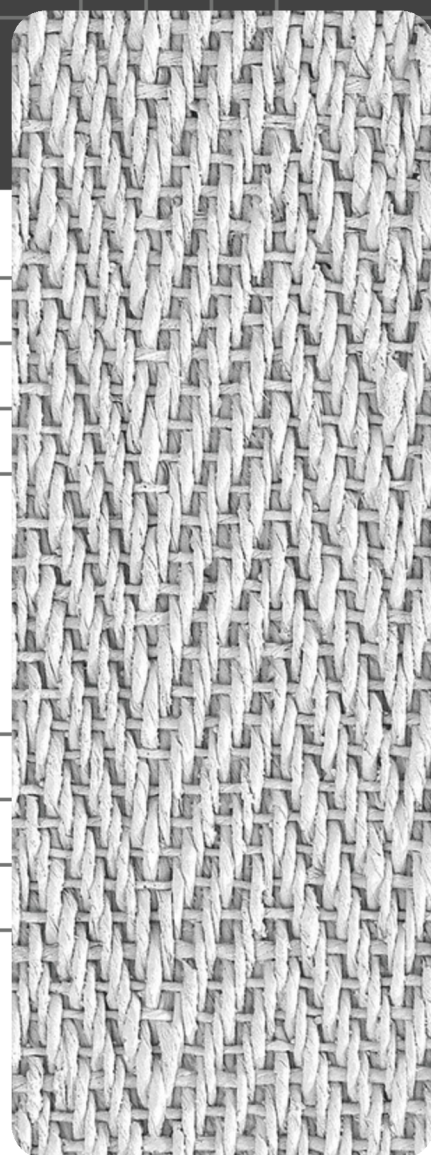
## ROPE RIPPLE

1350mm X 600mm



## ROPE WAVE

1350mm X 600mm



## WEAVING

1350mm X 600mm



Our products are made from natural clay and may contain pin holes, surface anomalies, scratch marks, small size variations (on diagonal less than 2mm), colour variations and thickness variations. These variations are intentional to encapsulate the raw qualities of these rustic, intricate and unique finishes. The variations do not affect the installation, and add to the overall character and aesthetic value. Every piece of Ittimi product inherently lacks uniformity and is subject to variation in aesthetics, design, shade, finish, thickness, density, etc.





**RATTAN MAT**

1350mm X 600mm



White



Beige



**RATTAN WOVEN**

1200mm X 600mm

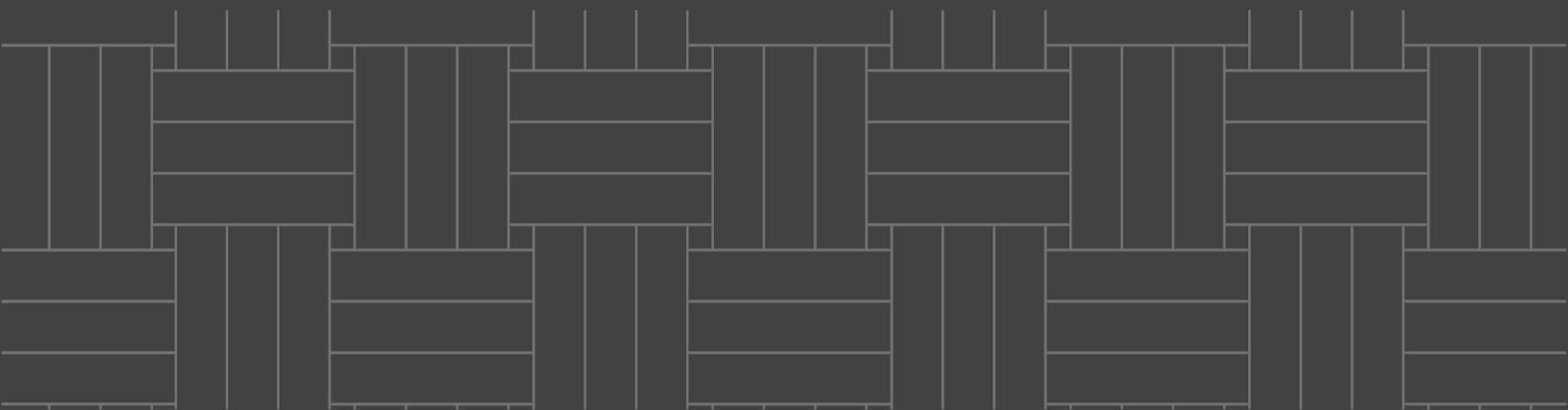


White



Beige

Our products are made from natural clay and may contain pin holes, surface anomalies, scratch marks, small size variations (on diagonal less than 2mm), colour variations and thickness variations. These variations are intentional to encapsulate the raw qualities of these rustic, intricate and unique finishes. The variations do not affect the installation, and add to the overall character and aesthetic value. Every piece of Itimi product inherently lacks uniformity and is subject to variation in aesthetics, design, shade, finish, thickness, density, etc.







Luxury has a new way of  
presenting a **flair of  
exuberance.**

---



{ RATTAN WOVEN



## ENGRAVING TOUCH

A level above the  
ordinary existence.

---







## RATTAN KNIT

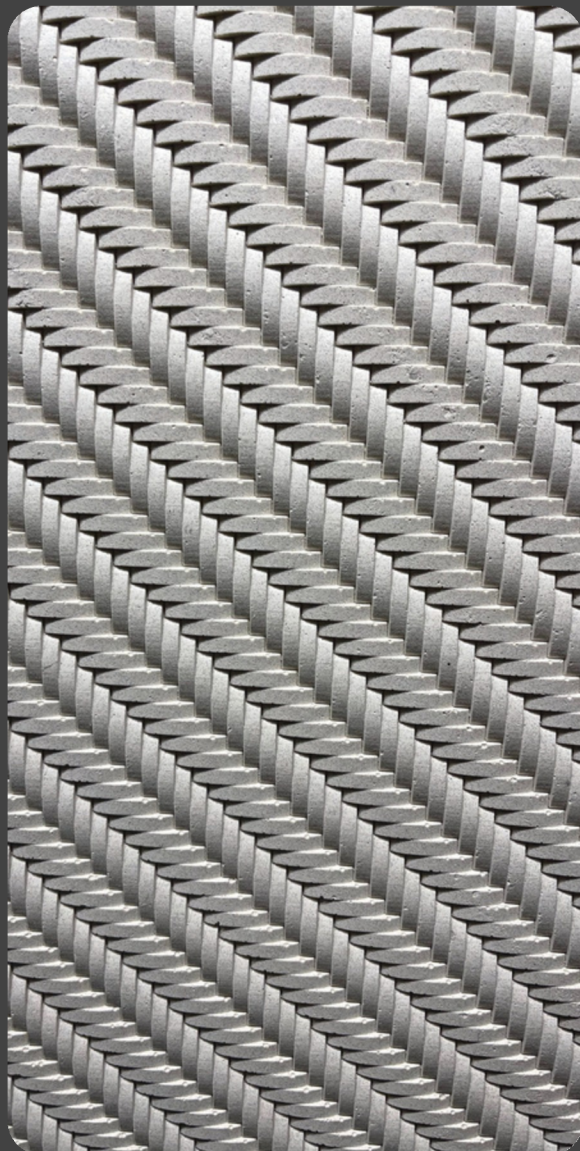
1350mm X 600mm



White



Beige



## RATTAN FLOWER

1200mm X 600mm



White



Beige

Our products are made from natural clay and may contain pin holes, surface anomalies, scratch marks, small size variations (on diagonal less than 2mm), colour variations and thickness variations. These variations are intentional to encapsulate the raw qualities of these rustic, intricate and unique finishes. The variations do not affect the installation, and add to the overall character and aesthetic value. Every piece of Ittimi product inherently lacks uniformity and is subject to variation in aesthetics, design, shade, finish, thickness, density, etc.







## BAMBOO STRAW

1200mm x 600mm



White



Beige



## OCEANIC TRAVERTINE

1200mm x 600mm



Moonlight  
White

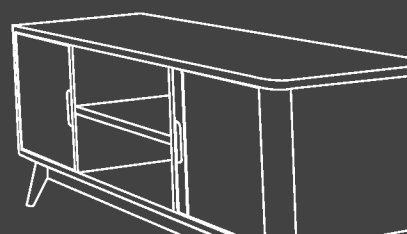


Greek  
Yellow



Spaces that have a feel of simplicity yet stylistic touch of high aesthetics that enhance the fervor altogether.

{ BAMBOO STRAW







It's a world of supremacy with  
simplicity & elegance that results in  
top notch stimulating impact.

---



CUT STONE }





**LINEAR STONE**  
1200mm X 600mm



White



Beige



**CUTSTONE**  
1200mm X 600mm



White



Grey



R04

Our products are made from natural clay and may contain pin holes, surface anomalies, scratch marks, small size variations (on diagonal less than 2mm), colour variations and thickness variations. These variations are intentional to encapsulate the raw qualities of these rustic, intricate and unique finishes. The variations do not affect the installation, and add to the overall character and aesthetic value. Every piece of Ittimi product inherently lacks uniformity and is subject to variation in aesthetics, design, shade, finish, thickness, density, etc.





Luxury has a new way of  
presenting a flair of  
exuberance.



ARCUATE ROCK }





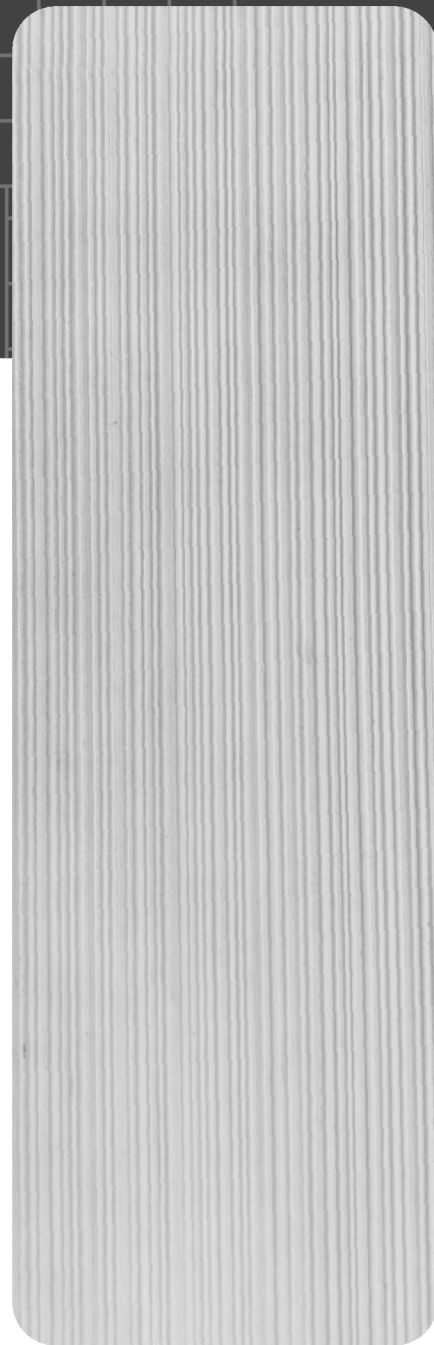
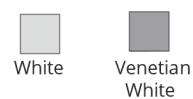
**ARCUATE ROCK**  
2800mm X 600mm



**STRIPE STONE**  
1350mm X 600mm



**FINELINE STONE**  
2800mm X 600mm



Our products are made from natural clay and may contain pin holes, surface anomalies, scratch marks, small size variations (on diagonal less than 2mm), colour variations and thickness variations. These variations are intentional to encapsulate the raw qualities of these rustic, intricate and unique finishes. The variations do not affect the installation, and add to the overall character and aesthetic value. Every piece of Ittimi product inherently lacks uniformity and is subject to variation in aesthetics, design, shade, finish, thickness, density, etc.





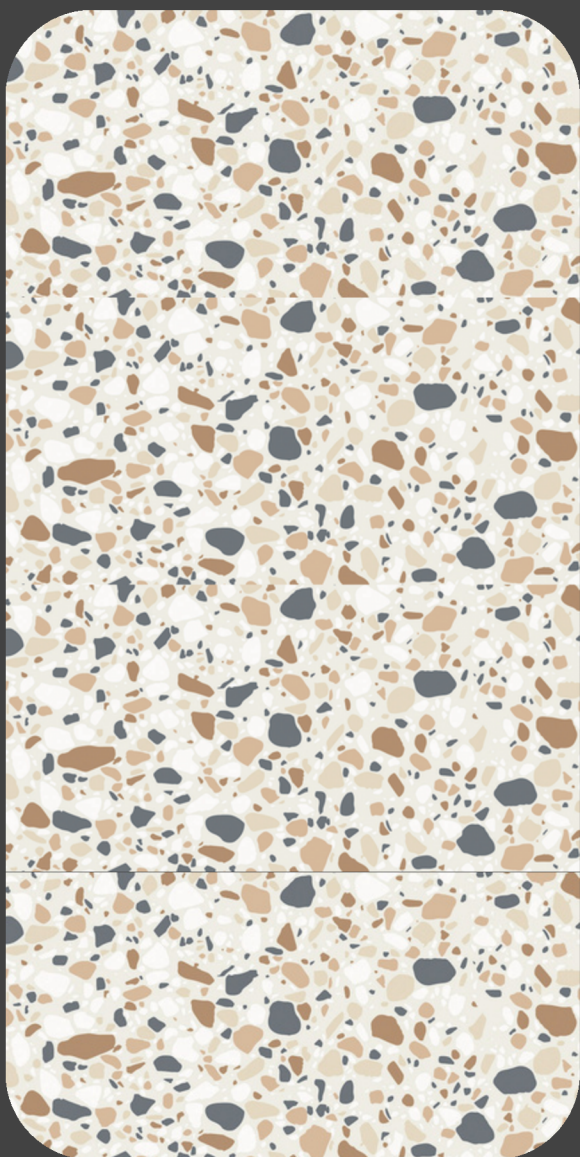
Get ready to tell a tale  
of finish that holds a space  
of its own.

---

STACKLE SQUARE }







**TERAZZO MULTICOLOUR**  
1200mm X 600mm



**STACKLE SQUARE**  
1200mm X 600mm



Our products are made from natural clay and may contain pin holes, surface anomalies, scratch marks, small size variations (on diagonal less than 2mm), colour variations and thickness variations. These variations are intentional to encapsulate the raw qualities of these rustic, intricate and unique finishes. The variations do not affect the installation, and add to the overall character and aesthetic value. Every piece of Ittmi product inherently lacks uniformity and is subject to variation in aesthetics, design, shade, finish, thickness, density, etc.









# IDEATE INNOVATE INVENT



## MCMFLEXI CLADDING INDIA PVT. LTD.

Head Office: #101-103, Damji Shamji Udyog  
Bhavan, Veera Desai Rd, Andheri West,  
Mumbai, Maharashtra - 400053



 [www.ittimi.com](http://www.ittimi.com)  [ittimi@mcmcladding.com](mailto:ittimi@mcmcladding.com)  
 [/mcmcladdingindia](https://www.instagram.com/mcmcladdingindia)  [/mcmflexicladding](https://www.facebook.com/mcmflexicladding)  
 [/mcm-cladding](https://www.linkedin.com/company/mcm-cladding)  
 [/MCMCladding](https://www.youtube.com/MCMCladding)

**Note:** All the colour shades seen in the catalogue are for illustration purpose.  
Actual shades may vary.